

— 立足全国·放眼世界 —
Based on the whole country, looking at the world.



恒波（致远）超声波设备

20年专注超声波 焊接设备制造、研发

Focus on welding equipment manufacturing and research for 20 years



恒波（致远）超声波设备

— 应用行业 / Application industry —

金属线束、医疗、灯饰、电讯、耗材、家电、汽车、包装、卫生、文具、玩具、水处理、注塑等。

Metal wiring harness, medical treatment, lighting, telecommunications, consumables, home appliances, automobiles, packaging, sanitation, stationery, toys, water treatment, injection molding, etc.



诚信·务实·专注·高效
INTEGRITY · PRAGMATISM · FOCUS · EFFICIENCY

产品型录

COMPANY PROFILE

公司简介

本公司是一家集科研、生产、销售及服务于一体的超声波设备制造企业。公司拥有专业的研发、生产、售前、售后服务团队，主要产品有超声波发生器、超声波焊机、转盘式焊机、高频精密焊机、超声波水口分离机、超声波点焊机、旋转式焊机及非标自动化定制等。公司配备先进的超声波测试仪器，拥有数名从事超声波行业达 20 年以上的资深研发人员，致力于各种高精度的超声波研发，全面发展各种熔接技术及非标设备，为客户提供专业的超声波焊接技术方案。

公司以追求品质、诚信服务为宗旨；以客户满意为目标；以引领超声波行业发展为己任；将众多国际先进技术引入超声波行业。公司的诚信、实力和产品质量已获得业界的认可，我们将建立属于本行业所持有的规范，并立志成为超声波行业永远的典范。

公司将一如既往地坚持以优质的产品找市场、以合理的价格寻朋友、以真诚的服务待客户，真诚与社会各界合作，携手共进、开拓市场、共创辉煌。



The company is an ultrasonic equipment manufacturing enterprise integrating scientific research, production, sales and service. The company has a professional R&D, production, pre-sale and after-sales service team. The main products are ultrasonic generators, ultrasonic welding machines, rotary welding machines, high-frequency precision welding machines, ultrasonic nozzle separators, ultrasonic spot welding machines, and rotary welding machines. Machine and non-standard automation customization, etc. The company is equipped with advanced ultrasonic testing equipment, and has several senior R&D personnel who have been engaged in the ultrasonic industry for more than 20 years. They are committed to various high-precision ultrasonic research and development, comprehensively develop various welding technologies and non-standard equipment, and provide customers with professional ultrasonic Welding technical solutions.

The company takes the pursuit of quality and sincere service as its purpose; customer satisfaction as its goal; its mission to lead the development of the ultrasound industry; and the introduction of many international advanced technologies into the ultrasound industry. The company's integrity, strength and product quality have been recognized by the industry. We will establish standards that belong to the industry and aspire to become an eternal model in the ultrasound industry.

The company will, as always, insist on finding the market with high-quality products, seeking friends at reasonable prices, treating customers with sincere service, and sincerely cooperate with all walks of life in the society to advance hand in hand, open up the market, and create brilliance together.



COMPANY CULTURE

企业文化

沟通无限，合作无限，机遇无限。公司对未来满怀信心，并愿以坦诚的胸怀、热诚的合作、贴心的服务，欢迎各界朋友与我们携手共进，共建繁荣！

Unlimited communication, unlimited cooperation and unlimited opportunities. The company is full of confidence in the future, and is willing to welcome friends from all walks of life to work together with us to build prosperity with candid mind, enthusiastic cooperation and considerate service!



企业愿景 Corporate Vision

成为超声波焊接领域的领导者
Become a leader in the field of ultrasonic welding.



企业使命 Enterprise Mission

为客户创造价值，为员工谋福利
Create value for customers and seek benefits for employees.



核心价值 Core Value

诚信·务实·专注·高效
Integrity, pragmatism, focus, efficiency.



行为准则 Code Of Conduct

日日精进，生生不息。
Improve every day and continue to innovate.

PRODUCT CONTENTS

产品目录

发生器系列

启程款：QC-200	05
启航款：QH-200	07
标准款：HS-200	09
标准大功率款：HS-D200	11

焊机系列

启程款焊机：QC-9000	13
启程款焊机：QC-9001	14
启航款焊机：QH-8000	15
征鸿款焊机：ZH-2840	16
标准款焊机：HS-1500	17
标准款焊机：HS-2000	18
标准款焊机：HS-1532	19
征言款焊机：ZY-8500	20
标准豪华型焊机：HS-H1520	21
标准豪华型焊机：HS-H1532	22
标准大功率型焊机：HS-D1542	23

振水口机系列

第Ⅲ代立式振水口机	25
第Ⅱ代立式振水口机	27
第Ⅰ代卧式振水口机	29
第Ⅱ代手提式振水口机	31

非标自动化系列

自动转盘式焊机	33
多头式焊机	35
旋转式熔接机	37

点焊机系列

超声波点焊机	39
--------	----

换能器系列

	41
--	----

配件系列

	44
--	----

发生器系列 / GENERATOR SERIES

| 诚信 · 务实 · 专注 · 高效 |

QC-200 启程款

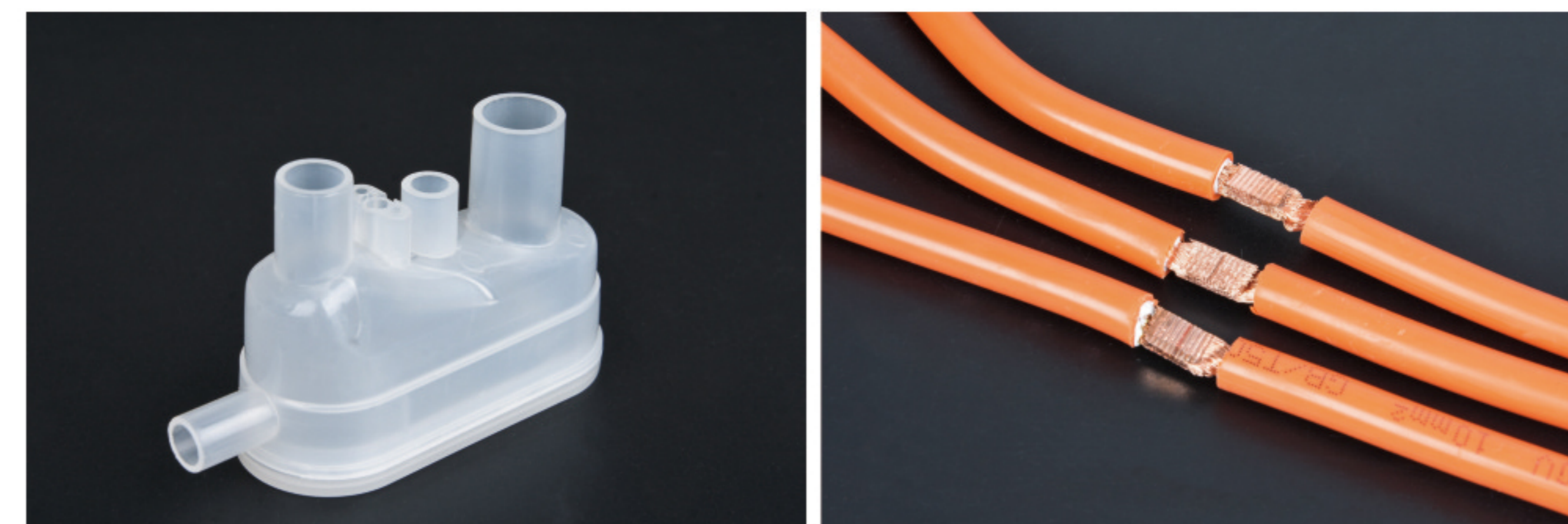
Qicheng

特点 / Features

- 全新操作系统，数字化操控。
- 换能器电容精准匹配，黄片、黑片全系列兼容。
- 钢模、铝模兼容。
- 可切换中英文。
- 输出功率更强劲、性能更稳定、发波更细腻。
- 支持485通讯、支持修改本地通讯地址、支持三级密码解锁。
- 工作界面可视，具备品质监控功能及数据导出。
- 可订制全彩开机界面。
- Brand new operating system, digital control.
- The transducer capacitance is accurately matched, and the full range of yellow and black films are compatible.
- Compatible with steel mold and aluminum mold.
- Can switch between Chinese and English.
- The output power is stronger, the performance is more stable, and the wave is more delicate.
- Support 485 communication, support modification of local communication address, support three-level password unlocking.
- The working interface is visible, with quality monitoring functions and data export.
- Full-color boot interface can be customized.

主打应用行业 / Main application industry

金属线束、食品、汽配、家电、耗材、电子电讯、医疗、灯饰、包装等。
Metal wiring harness, food, auto parts, home appliances, consumables, electronic telecommunications, medical treatment, lighting, packaging, etc.



技术参数 / Technical Parameters

外形尺寸 Dimensions	380mm × 345mm × 155mm
主机净重 Host net weight	10.5KG
工作频率 working frequency	15KHZ/20KHZ/28KHZ/30KHZ/35KHZ/40KHZ 可选
输出功率 Output Power	400W-5000W
工作电源 Power supply	AC220V 50HZ
自动追频精度 Automatic frequency tracking accuracy	±0.5KHZ
款式 shape	立式/卧式 可选



发生器系列 / GENERATOR SERIES

| 诚信 · 务实 · 专注 · 高效 |

QH-200 启航款
Qihang

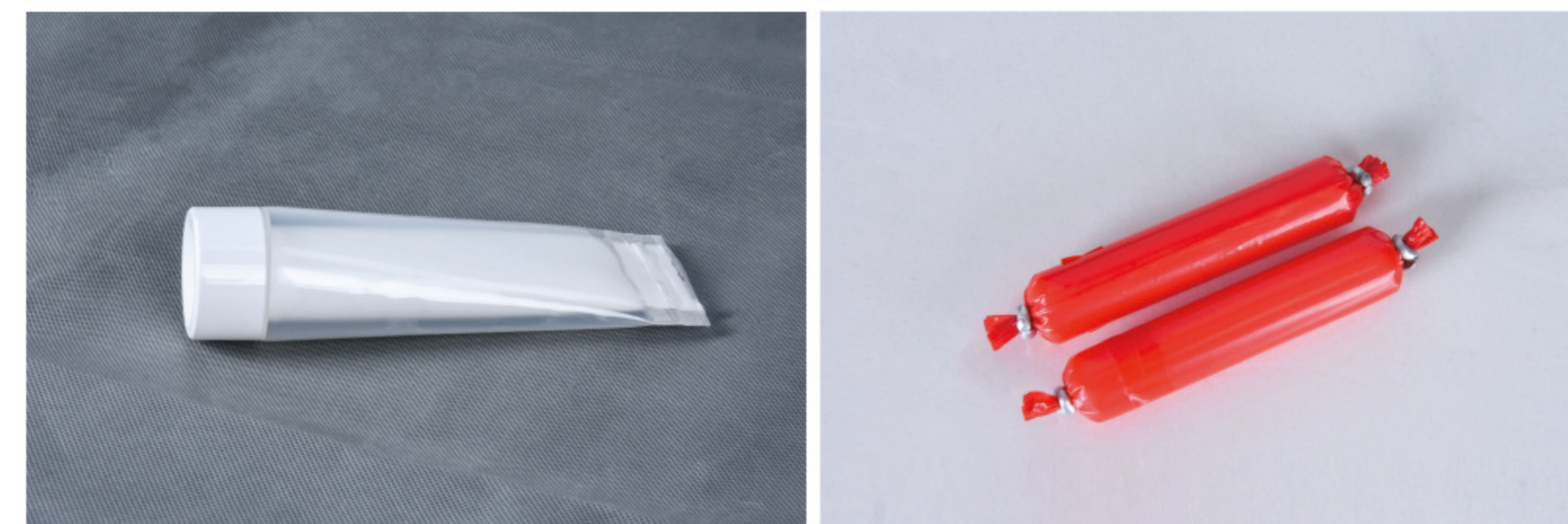
特点 / Features

- 升级款操作系统，数字化操控。
- 换能器电容精准匹配,黄片、黑片全系列兼容。
- 钢模、铝模兼容。
- 可切换中英文。
- 输出功率更强劲、性能更稳定、发波更细腻。
- 支持485通讯、支持修改本地通讯地址。
- 可订制全彩开机界面。
- Upgraded operating system, digital control.
- The transducer capacitance is accurately matched, and the full range of yellow and black films are compatible.
- Compatible with steel mold and aluminum mold.
- Can switch between Chinese and English.
- The output power is stronger, the performance is more stable, and the wave is more delicate.
- Support 485 communication, support modification of local communication address.
- Full-color boot interface can be customized.

恒波（致远）超声波设备

主打应用行业 / Main application industry

口罩机、制袋机、拉链机、办公文具、土工格栅、切带机、无纺布等。
mask machine, bag making machine, zipper machine, office stationery, geogrid, tape cutting machine, non-woven fabric, etc.



技术参数 / Technical Parameters

外形尺寸 Dimensions	380mm × 290mm × 110mm
主机净重 Host net weight	6KG
工作频率 working frequency	15KHZ/20KHZ/28KHZ/30KHZ/35KHZ/40KHZ
输出功率 Output Power	400-3000W
工作电源 Power supply	AC220V 50HZ
自动追频精度 Automatic frequency tracking accuracy	±0.5KHZ
款式 shape	立式/卧式 可选

发生器系列 / GENERATOR SERIES

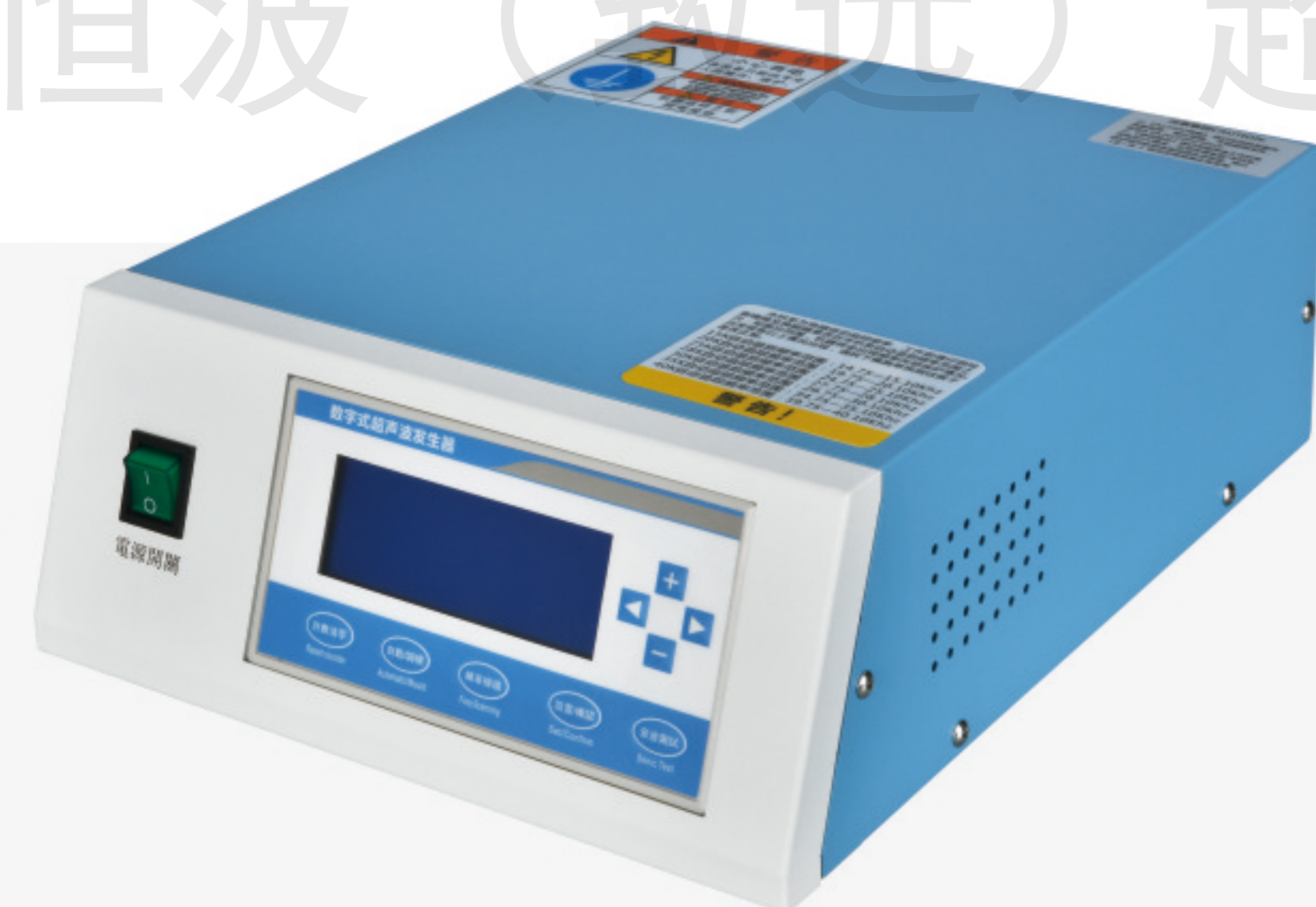
| 诚信 · 务实 · 专注 · 高效 |

HS-200 标准款
Standard

特点 / Features

- 自动追频，无需人工调频。
- 智能保护，有效降低模具、换能器损耗。
- 振幅1-100可调，实现精准焊接。
- 德国IGBT功率模块，输出稳定。
- Automatic frequency tracking, without manual frequency adjustment.
- Intelligent protection effectively reduces the loss of molds and transducers.
- The amplitude is adjustable from 1-100 to realize precise welding.
- German IGBT power module with stable output.

恒波（致远）超声波设备



文本屏 / Text screen



4.3寸触摸屏 / 4.3 inch touch screen

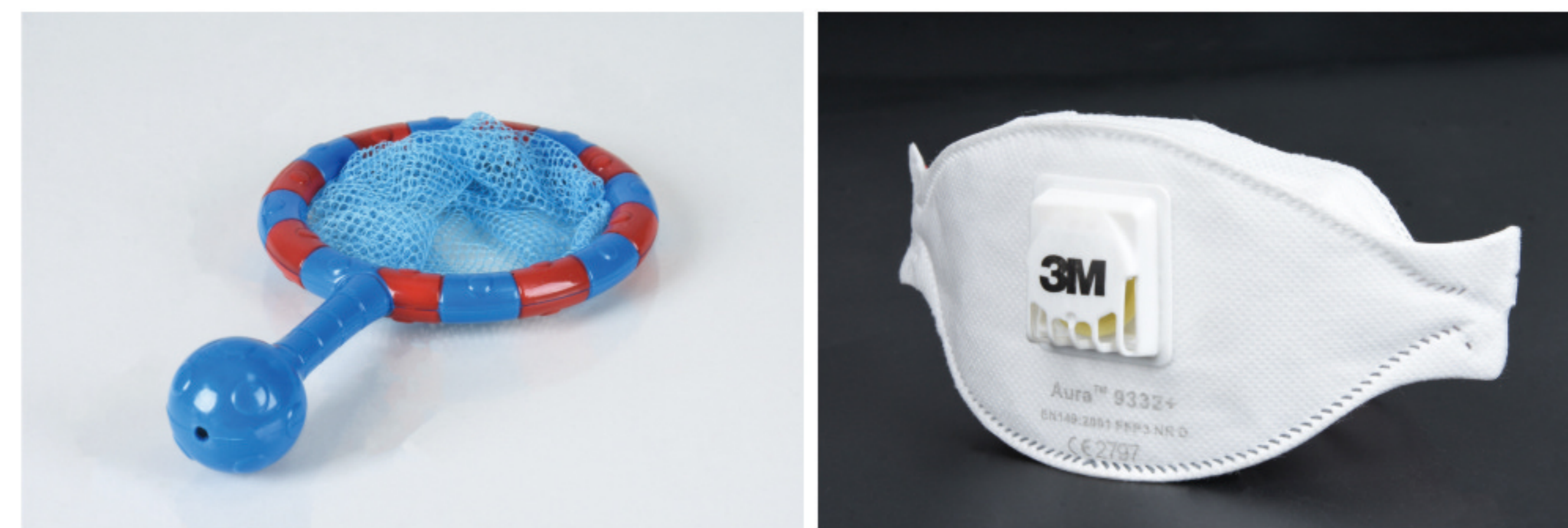


旋钮屏 / Knob screen

主打应用行业 / Main application industry

玩具、文具、小家电等。

Toys, stationery, small household appliances, etc.



技术参数 / Technical Parameters

外形尺寸 Dimensions	380mm × 290mm × 110mm
主机净重 Host net weight	6KG
工作频率 working frequency	15KHZ/20KHZ/28KHZ/30KHZ/35KHZ/40KHZ
输出功率 Output Power	400-2600W
工作电源 Power supply	AC220V 50HZ
自动追频精度 Automatic frequency tracking accuracy	±0.5KHZ
款式 shape	文本屏/触摸屏 可选

发生器系列 / GENERATOR SERIES

| 诚信·务实·专注·高效 |

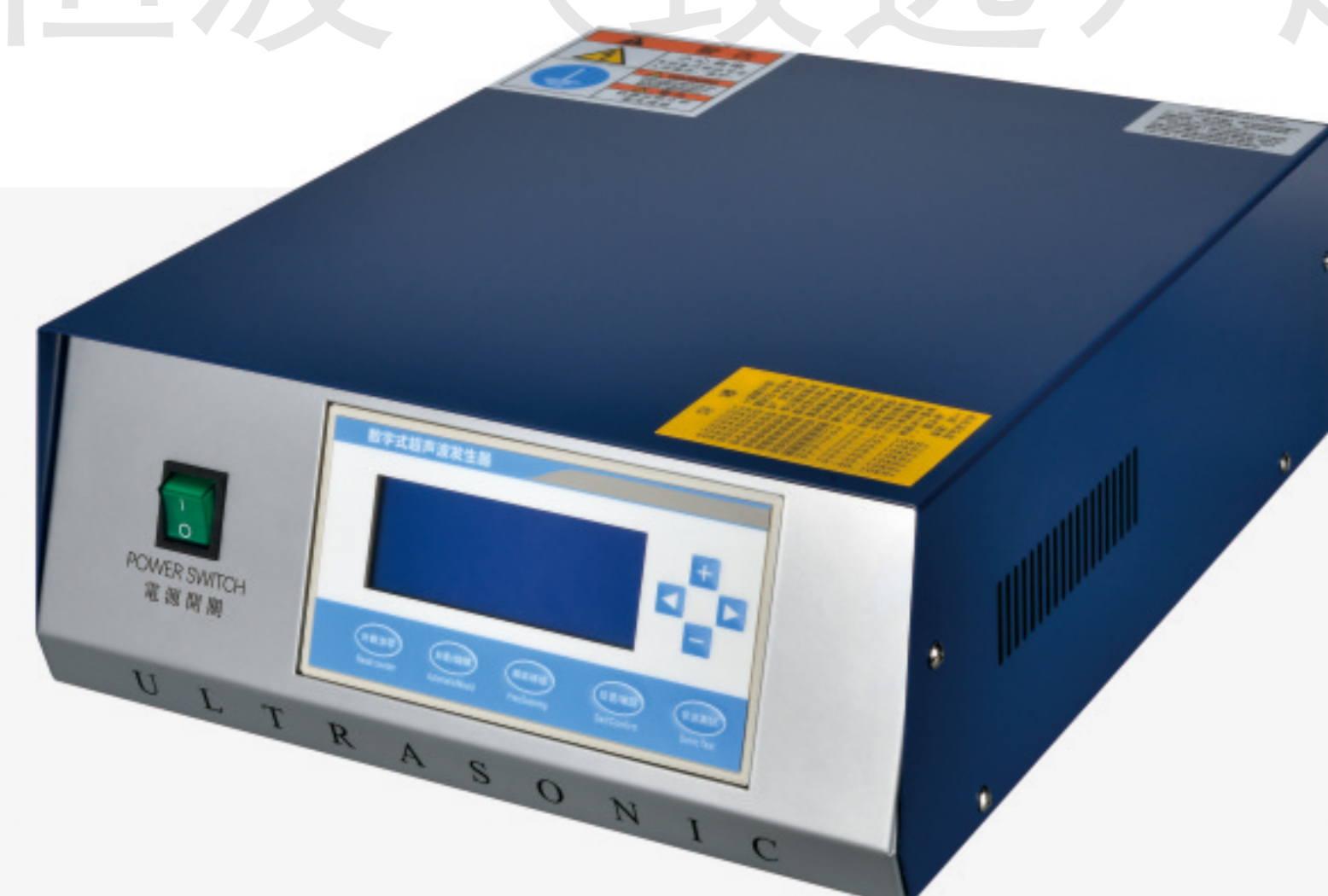
HS-D200 标准大功率款

Standard high power

特点 / Features

- 自动追频，无需人工调频。
- 智能保护，有效降低模具、换能器损耗。
- 振幅1-100可调，实现精准焊接。
- 德国IGBT功率模块，出力强劲，输出稳定。
- 时间、外控模式，满足多元化焊接需求。
- Automatic frequency tracking, without manual frequency adjustment.
- Intelligent protection effectively reduces the loss of molds and transducers.
- The amplitude is adjustable from 1-100 to realize precise welding.
- German IGBT power module has strong output and stable output.
- Time, external control mode to meet diversified welding needs.

恒波（致远）超声波设备



深蓝



4.3寸触摸屏 / 4.3 inch touch screen



黑咖

主打应用行业 / Main application industry

电器、医疗、汽配、耗材、电讯、卫浴等。
Toys, stationery, small household appliances, etc.



技术参数 / Technical Parameters

外型尺寸 Dimensions	390mm × 340mm × 150mm	390mm × 340mm × 150mm	390mm × 340mm × 150mm
主机净重 Host net weight	9.5KG	9.5KG	10.5KG
工作频率 working frequency	15KHZ	20KHZ	15KHZ
输出功率 Output Power	3200W	2600W	4200-5000W
工作电源 Power supply	AC220V 50HZ	AC220V 50HZ	AC220V 50HZ
自动追频精度 Automatic frequency tracking accuracy	±0.5KHZ	±0.5KHZ	±0.5KHZ
颜色 colour	深蓝	深蓝	黑咖
屏幕款式 Screen style	文本屏/触摸屏 可选		

焊接机系列 / WELDING MACHINE

| 诚信·务实·专注·高效 |

QC-9000 启程款焊接机

Qicheng welding machiner

特点 / Features

- 全新操作系统，数字化操控。
- 工作界面可视，焊接品质可监控。
- 支持485通讯，焊接数据导出。
- 可修改通讯地址，实现远程一键操控。
- 钢质机身，立柱采用同心直轴设计，焊接精度高。
- 时间、能量、外控、自循环模式。
- Brand new operating system, digital control.
- The working interface is visible, and the welding quality can be monitored.
- Support 485 communication and export welding data.
- The communication address can be modified to realize remote one-key control.
- The steel body, the column adopts the concentric straight shaft design, and the welding accuracy is high.
- Time, energy, external control, self-circulation mode.

技术参数 / Technical Parameters

工作频率 working frequency	15KHZ	15KHZ	20KHZ	20KHZ
输出功率 output power	2000W	3200W	2000W	2600W
语言选择 language selection	中文/英文			
输入电压 input voltage	单相AC220V			
频率范围 frequency range	±0.5KHZ			
振幅调整 amplitude adjustment	1%-100%可调			
焊头行程 welding head stroke	50-125mm			
焊接时间 welding time	0.01-9.99s			
接入气压 access air pressure	0.1-0.7Mpa			
振头冷却 vibrating head cooling	风冷			
工作台尺寸 working desk size	330*330mm			
机器尺寸 machine size	710*370*1150mm			
机器重量 machine weight	约90KG			

主打应用行业 / Main application industry

家电、耗材、电讯、医疗等。
Home appliances, consumables, telecommunications, medical care, etc.



QC-9001 启程款焊接机

Qicheng welding machiner

特点 / Features

- 全新操作系统，数字化操控。
- 工作界面可视，焊接品质可监控。
- 支持485通讯，焊接数据导出。
- 可修改通讯地址，实现远程一键操控。
- 钢质机身，立柱采用同心直轴设计，焊接精度高。
- 时间、能量、外控、自循环模式。
- 双层储物空间设计，可放置电箱、模具、工具箱等。
- Brand new operating system, digital control.
- The working interface is visible, and the welding quality can be monitored.
- Support 485 communication and export welding data.
- The communication address can be modified to realize remote one-key control.
- The steel body, the column adopts the concentric straight shaft design, and the welding accuracy is high.
- Time, energy, external control, self-circulation mode.
- Double-layer storage space design can be placed in electrical boxes, molds, tool boxes, etc.

技术参数 / Technical Parameters

工作频率 working frequency	15KHZ	15KHZ	20KHZ	20KHZ
输出功率 output power	2000W	3200W	2000W	2600W
语言选择 language selection	中文/英文			
输入电压 input voltage	单相AC220V			
频率范围 frequency range	±0.5KHZ			
振幅调整 amplitude adjustment	1%-100%可调			
焊头行程 welding head stroke	50-125mm			
焊接时间 welding time	0.01-9.99s			
接入气压 access air pressure	0.1-0.7Mpa			
振头冷却 vibrating head cooling	风冷			
工作台尺寸 working desk size	650*650mm			
机器尺寸 machine size	740*650*1800mm			
机器重量 machine weight	约190KG			

主打应用行业 / Main application industry

家电、医疗、灯饰、汽配等。
Home appliances, medical care, lighting, auto parts, etc.



焊接机系列 / WELDING MACHINE

| 诚信 · 务实 · 专注 · 高效 |

QH-8000 启航款焊接机

Qihang welding machine

特点 / Features

- 升级款操作系统，数字化操控。
- 加厚机身，坚固稳定、方便实用。
- 双键启动，符合安全标准。
- 应用场景多元化。
- Upgraded operating system, digital control.
- The thickened body is firm and stable, convenient and practical.
- Two-key start, in line with safety standards.
- Diversified application scenarios.

技术参数 / Technical Parameters

工作频率 working frequency	15KHZ	20KHZ
输出功率 output power	2600W	2000W
语言选择 language selection	中文/英文	
输入电压 input voltage	单相AC220V	
频率范围 frequency range	±0.5KHZ	
振幅调整 amplitude adjustment	1%-100%可调	
焊头行程 welding head stroke	50-125mm	
焊接时间 welding time	0.01-9.99s	
接入气压 access air pressure	0.1-0.7Mpa	
振头冷却 vibrating head cooling	风冷	
工作台尺寸 working desk size	195*310mm	
机器尺寸 machine size	640*400*1000mm	
机器重量 machine weight	约65KG	

主打应用行业 / Main application industry

包装、文具、耗材、电讯、无纺布、灯饰等。
Packaging, stationery, consumables, telecommunications, non-woven fabrics, lighting, etc.



15

ZH-2840 征鸿款焊接机

Zhenghong welding machine

特点 / Features

- 加厚钢质机身，抱合式燕尾槽，下压回升不偏移。
- SMC气动组合+滑块导轨，焊头升降顺畅稳定。
- 焊接行程可精密微调，焊接精度高。
- 底板可调式结构，调试模具方便快捷。
- The thickened steel body, with a closed dovetail groove, does not deviate when the downward pressure rises.
- SMC pneumatic combination + slide rail, the welding head rises and falls smoothly and stably.
- The welding stroke can be fine-tuned precisely, and the welding accuracy is high.
- Adjustable bottom plate structure, convenient and quick to debug the mold.

技术参数 / Technical Parameters

工作频率 working frequency	28KHZ	30KHZ	35KHZ	40KHZ
输出功率 output power	1200W	1000W	800W	600W
语言选择 language selection	中文/英文			
输入电压 input voltage	单相AC220V			
频率范围 frequency range	±0.5KHZ			
振幅调整 amplitude adjustment	1%-100%可调			
焊头行程 welding head stroke	50-75mm			
焊接时间 welding time	0.01-9.99s			
接入气压 access air pressure	0.1-0.7Mpa			
振头冷却 vibrating head cooling	风冷			
工作台尺寸 working desk size	195*310mm			
机器尺寸 machine size	500*320*1000mm			
机器重量 machine weight	约70KG			

主打应用行业 / Main application industry

精密型电子产品、耗材等。
Precision electronic products, consumables, etc.



搭配QH-200启航款发生器
With QH-200 Qihang generator



16

焊接机系列 / WELDING MACHINE

| 诚信·务实·专注·高效 |

HS-1500 标准焊接机

Standard welding machine

特点 / Features

- 数字型操作系统，操作简单。
- 具备过载保护功能，性能稳定。
- 水平四点调整功能，校模方便。
- Digital operating system, simple operation.
- With overload protection function, stable performance.
- Level four-point adjustment function, easy to calibrate the model.

技术参数 / Technical Parameters

工作频率 working frequency	15KHZ
输出功率 Output Power	2600W
颜色 colour	蓝色/红色 可选
机架 frame	圆柱/方柱 可选
语言选择 language selection	中文/英文
输入电压 Input voltage	单相AC220V
频率范围 Frequency Range	±0.5KHZ
振幅调整 Amplitude adjustment	1%-100%可调
焊头行程 Welding head stroke	75mm
焊接时间 Welding time	0.01-9.99s
接入气压 Access air pressure	0.1-0.7Mpa
振头冷却 Vibrating head cooling	风冷
工作台尺寸 working desk size	355*350mm
机器尺寸 Machine size	650*400*1000mm
机器重量 Machine weight	约66KG

主打应用行业 / Main application industry

玩具、文具、电讯、家电、水口分离（锌合金、塑胶）等。
Toys, stationery, telecommunications, home appliances, nozzle separation (zinc alloy, plastic), etc.



17

HS-2000 标准焊接机

Standard welding machine

特点 / Features

- 数字型操作系统，操作简单。
- 具备过载保护功能，性能稳定。
- 水平四点调整功能，校模方便。
- Digital operating system, simple operation.
- With overload protection function, stable performance.
- Level four-point adjustment function, easy to calibrate the model.

技术参数 / Technical Parameters

工作频率 working frequency	20KHZ
输出功率 Output Power	2000W
颜色 colour	蓝色/红色 可选
机架 frame	圆柱/方柱 可选
语言选择 language selection	中文/英文
输入电压 Input voltage	单相AC220V
频率范围 Frequency Range	±0.5KHZ
振幅调整 Amplitude adjustment	1%-100%可调
焊头行程 Welding head stroke	75mm
焊接时间 Welding time	0.01-9.99s
接入气压 Access air pressure	0.1-0.7Mpa
振头冷却 Vibrating head cooling	风冷
工作台尺寸 working desk size	355*350mm
机器尺寸 Machine size	650*400*1000mm
机器重量 Machine weight	约63KG

主打应用行业 / Main application industry

玩具、文具、电讯、家电、水口分离（锌合金、塑胶）等。
Toys, stationery, telecommunications, home appliances, nozzle separation (zinc alloy, plastic), etc.



18

焊接机系列 / WELDING MACHINE

| 诚信·务实·专注·高效 |

HS-1532 标准焊接机

Standard welding machine

特点 / Features

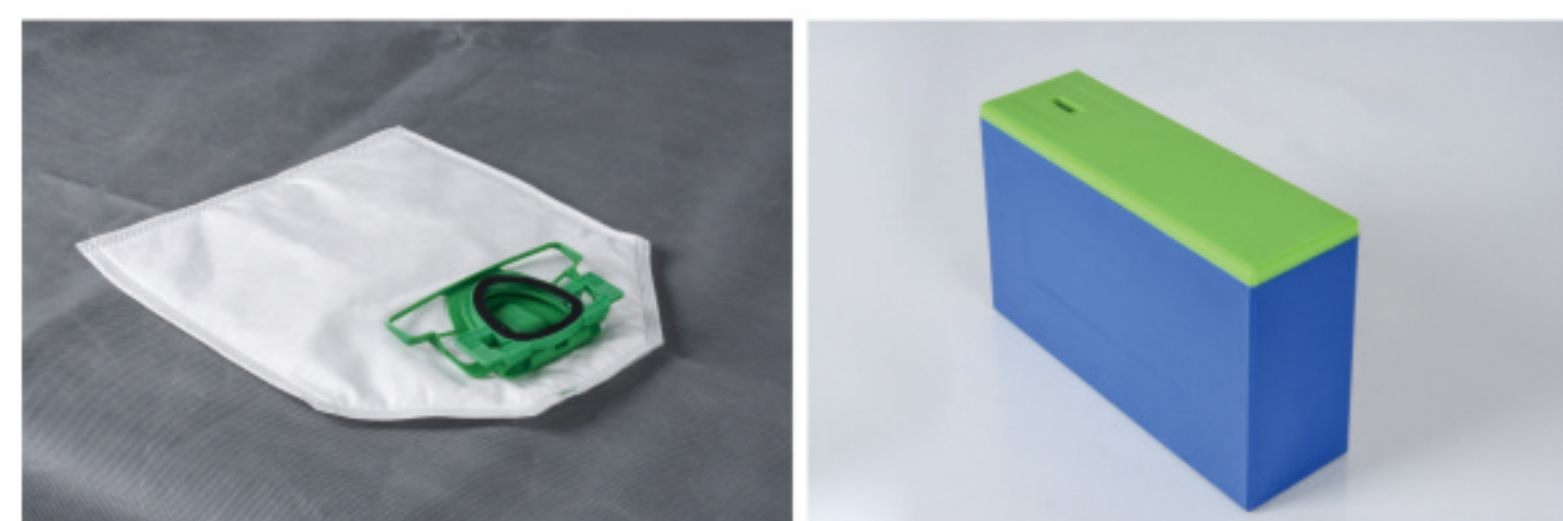
- 数字型操作系统，操作简单。
- 具备过载保护功能，性能稳定。
- 水平四点调整功能，校模方便。
- Digital operating system, simple operation.
- With overload protection function, stable performance.
- Level four-point adjustment function, easy to calibrate the model.

技术参数 / Technical Parameters

工作频率 working frequency	15KHZ
输出功率 Output Power	3200W
颜色 colour	蓝色/红色 可选
机架 frame	圆柱/方柱 可选
语言选择 language selection	中文/英文
输入电压 Input voltage	单相AC220V
频率范围 Frequency Range	±0.5KHZ
振幅调整 Amplitude adjustment	1%-100%可调
焊头行程 Welding head stroke	75mm
焊接时间 Welding time	0.01-9.99s
接入气压 Access air pressure	0.1-0.7Mpa
振头冷却 Vibrating head cooling	风冷
工作台尺寸 working desk size	355*350mm
机器尺寸 Machine size	600*380*1000mm
机器重量 Machine weight	约70KG

主打应用行业 / Main application industry

玩具、文具、电讯、家电、水口分离（锌合金、塑胶）等。
Toys, stationery, telecommunications, home appliances, nozzle separation (zinc alloy, plastic), etc.



19

ZY-8500 征言款焊接机

Zhengyan welding machine

特点 / Features

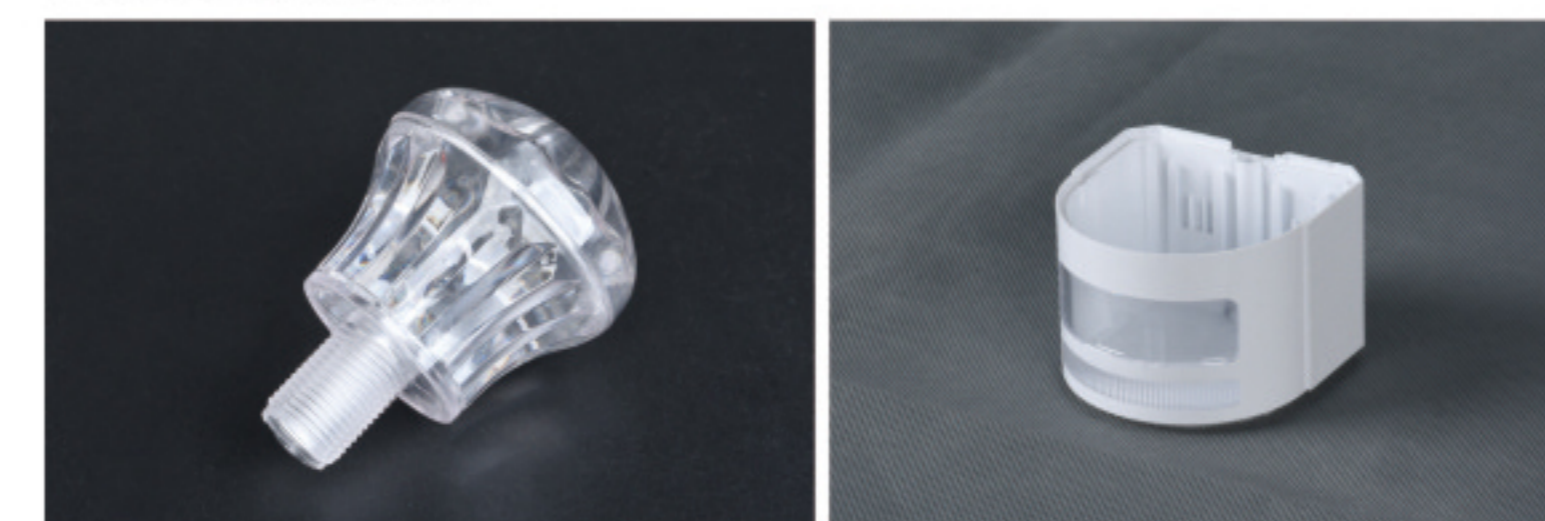
- 采用触摸屏控制，全新升级操作系统。
- 进口原装压电陶瓷换能器，输出强劲稳定。
- 方型立柱，导向轴承，精密微调装置。
- 底板可调式结构，调模方便快捷。
- It adopts touch screen control and newly upgraded operating system.
- Imported original piezoelectric ceramic transducer, strong and stable output.
- Square column, guide bearing, precision fine-tuning device.
- Adjustable structure of the bottom plate, convenient and quick to adjust the mold.

技术参数 / Technical Parameters

工作频率 working frequency	20KHZ
输出功率 Output Power	2000W
语言选择 language selection	中文/英文
输入电压 Input voltage	单相AC220V
频率范围 Frequency Range	±0.5KHZ
振幅调整 Amplitude adjustment	1%-100%可调
焊头行程 Welding head stroke	50-75mm
焊接时间 Welding time	0.01-9.99s
接入气压 Access air pressure	0.1-0.7Mpa
振头冷却 Vibrating head cooling	风冷
工作台尺寸 working desk size	380*300mm
机器尺寸 Machine size	670*400*1250mm
机器重量 Machine weight	约100KG

主打应用行业 / Main application industry

汽车、家电、耗材、电讯、医疗、灯饰等。
Automobiles, home appliances, consumables, telecommunications, medical, lighting, etc.



20



焊接机系列 / WELDING MACHINE

| 诚信 · 务实 · 专注 · 高效 |

HS-H1520 标准豪华型焊接机

Standard luxury welding machine

特点 / Features

- 数字型操作系统，操作简单。
- 具备过载保护功能，性能稳定。
- 水平四点调整功能，校模方便。
- 双层储物空间设计，可放置电箱、模具、工具箱等。
- 可加装光栅、隔音罩，操作安全。
- Digital operating system, simple operation.
- With overload protection function, stable performance.
- Level four-point adjustment function, easy to calibrate the model.
- Double-layer storage space design can be placed in electrical boxes, molds, tool boxes, etc.
- Grating and soundproof cover can be installed for safe operation.

技术参数 / Technical Parameters

工作频率 working frequency	15KHZ	20KHZ
输出功率 Output Power	2600W	2000W
机器重量 Machine weight	约160KG	约158KG
颜色 colour	蓝色/红色 可选	
语言选择 language selection	中文/英文	
输入电压 Input voltage	单相AC220V	
频率范围 Frequency Range	±0.5KHZ	
振幅调整 Amplitude adjustment	1%-100%可调	
焊头行程 Welding head stroke	75mm	
焊接时间 Welding time	0.01-9.99s	
接入气压 Access air pressure	0.1-0.7Mpa	
振头冷却 Vibrating head cooling	风冷	
工作台尺寸 working desk size	650*650mm	
机器尺寸 Machine size	740*650*1800mm	

主打应用行业 / Main application industry

包装、玩具、文具、电讯、家电、水口分离（锌合金、塑胶）等。
Packaging, toys, stationery, telecommunications, home appliances, nozzle separation (zinc alloy, plastic), etc.



HS-H1532 标准豪华型焊接机

Standard luxury welding machine

特点 / Features

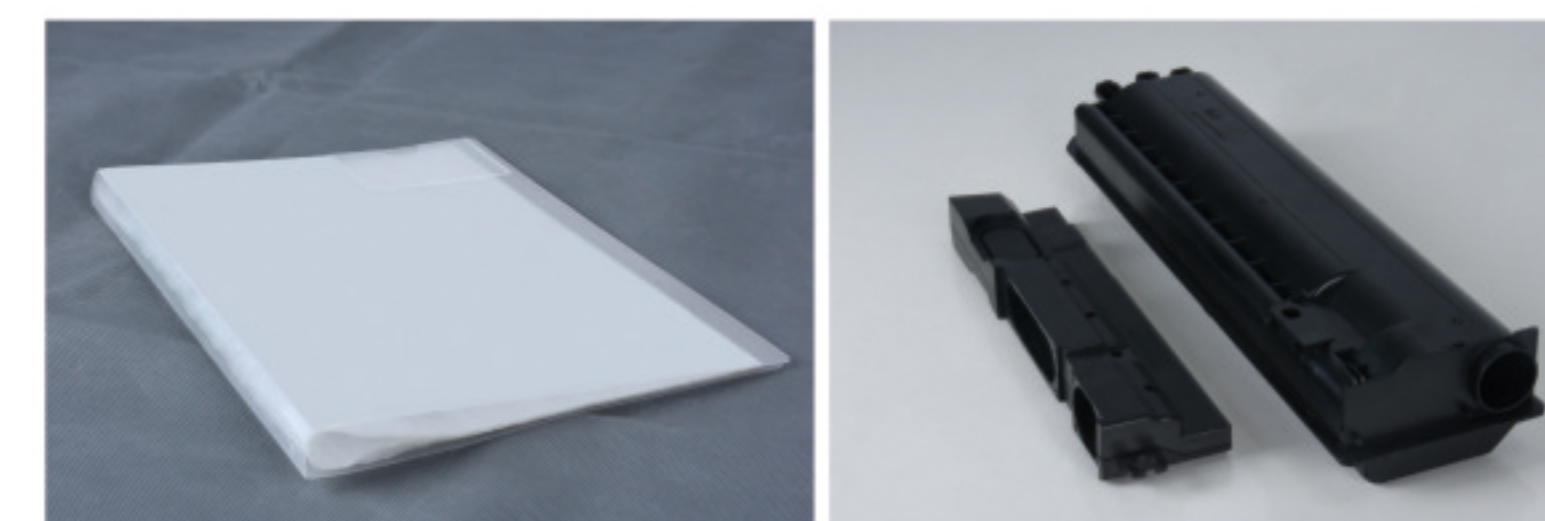
- 数字型操作系统，操作简单。
- 具备过载保护功能，性能稳定。
- 水平四点调整功能，校模方便。
- 双层储物空间设计，可放置电箱、模具、工具箱等。
- 可加装光栅、隔音罩，操作安全。
- Digital operating system, simple operation.
- With overload protection function, stable performance.
- Level four-point adjustment function, easy to calibrate the model.
- Double-layer storage space design can be placed in electrical boxes, molds, tool boxes, etc.
- Grating and soundproof cover can be installed for safe operation.

技术参数 / Technical Parameters

工作频率 working frequency	15KHZ
输出功率 Output Power	3200W
颜色 colour	蓝色/红色 可选
语言选择 language selection	中文/英文
输入电压 Input voltage	单相AC220V
频率范围 Frequency Range	±0.5KHZ
振幅调整 Amplitude adjustment	1%-100%可调
焊头行程 Welding head stroke	75mm
焊接时间 Welding time	0.01-9.99s
接入气压 Access air pressure	0.1-0.7Mpa
振头冷却 Vibrating head cooling	风冷
工作台尺寸 working desk size	650*650mm
机器尺寸 Machine size	740*650*1800mm
机器重量 Machine weight	约165KG

主打应用行业 / Main application industry

包装、玩具、文具、电讯、家电、水口分离（锌合金、塑胶）等。
Packaging, toys, stationery, telecommunications, home appliances, nozzle separation (zinc alloy, plastic), etc.



HS-D1542 标准大功率型焊接机

Standard high-power welding machine

特点 / Features

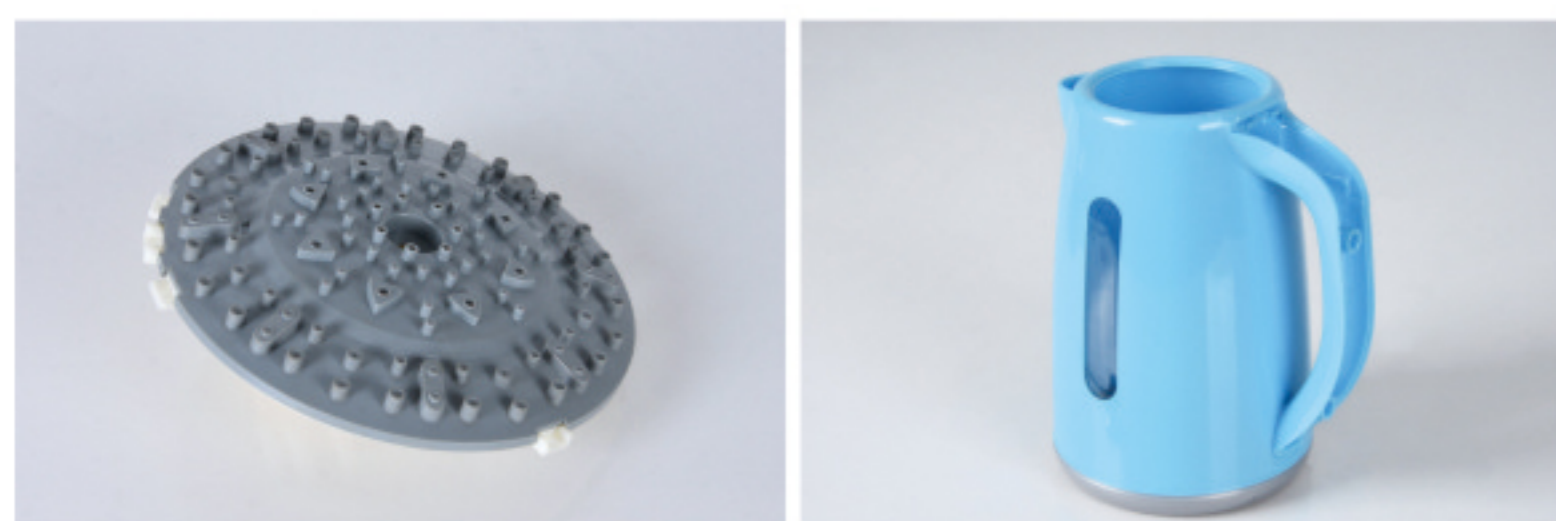
- 数字型操作系统，操作简单。
- 具备过载保护功能，性能稳定。
- 水平四点调整功能，校模方便。
- 一体式结构。
- 可加装光栅、隔音罩，操作安全。
- Digital operating system, simple operation.
- With overload protection function, stable performance.
- Level four-point adjustment function, easy to calibrate the model.
- One-piece structure.
- Grating and soundproof cover can be installed for safe operation.

技术参数 / Technical Parameters

工作频率 working frequency	15KHZ
输出功率 Output Power	4200W
颜色 colour	蓝色/灰色 可选
语言选择 language selection	中文/英文
输入电压 Input voltage	单相AC220V
频率范围 Frequency Range	±0.5KHZ
振幅调整 Amplitude adjustment	1%~100%可调
焊头行程 Welding head stroke	100mm
焊接时间 Welding time	0.01~9.99s
接入气压 Access air pressure	0.1~0.7Mpa
振头冷却 Vibrating head cooling	风冷
工作台尺寸 working desk size	750*675mm
机器尺寸 Machine size	750*960*1900mm
机器重量 Machine weight	约275KG

主打应用行业 / Main application industry

电器、医疗、汽配、耗材、电讯、卫浴等。
Electrical appliances, medical care, auto parts, consumables, telecommunications, sanitary ware, etc.



HS-D1542 标准大功率型焊接机

Standard high-power welding machine

特点 / Features

- 数字型操作系统，操作简单。
- 具备过载保护功能，性能稳定。
- 水平四点调整功能，校模方便。
- 分体式结构。
- 可加装光栅、隔音罩，操作安全。
- Digital operating system, simple operation.
- With overload protection function, stable performance.
- Level four-point adjustment function, easy to calibrate the model.
- Split structure.
- Grating and soundproof cover can be installed for safe operation.

技术参数 / Technical Parameters

工作频率 working frequency	15KHZ
输出功率 Output Power	4200~5000W
颜色 colour	黑咖/灰色 可选
机架 Rack	圆柱/方柱 可选
语言选择 language selection	中文/英文
输入电压 Input voltage	单相AC220V
频率范围 Frequency Range	±0.5KHZ
振幅调整 Amplitude adjustment	1%~100%可调
焊头行程 Welding head stroke	100mm
焊接时间 Welding time	0.01~9.99s
接入气压 Access air pressure	0.1~0.7Mpa
振头冷却 Vibrating head cooling	风冷
工作台尺寸 working desk size	750*675mm
机器尺寸 Machine size	750*960*1900mm
机器重量 Machine weight	约275KG

主打应用行业 / Main application industry

电器、医疗、汽配、耗材、电讯、卫浴等。
Electrical appliances, medical care, auto parts, consumables, telecommunications, sanitary ware, etc.



第三代 立式振水口机

Vertical vibration nozzle machine

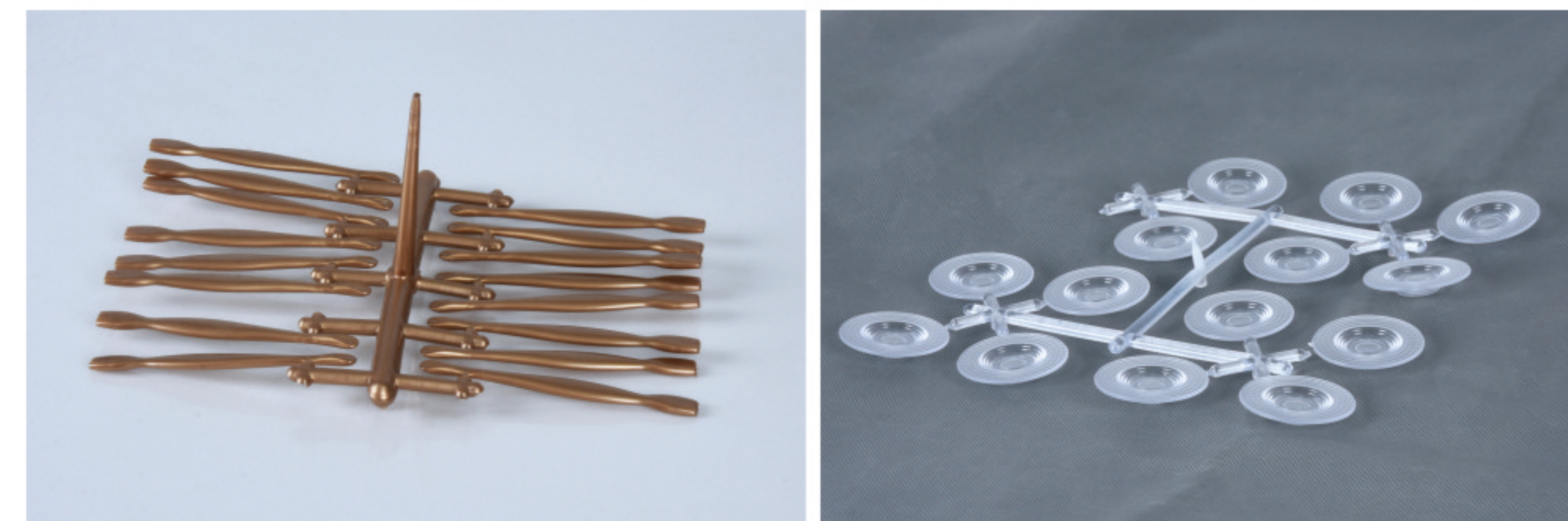
特点 / Features

- 升级款外观，底盘稳，升降不晃动。
- 注塑机专用，机身高度可电动调节，最高可达1.7米。
- 输出稳定，产品分离不变形、无残留水口。
- 工作模式：感应触发、延时触发。
- Upgraded appearance, stable chassis, no shaking when lifting.
- Special for injection molding machine, the height of the body can be adjusted electrically up to 1.7 meters.
- The output is stable, and the product is separated without deformation and no residual nozzle.
- Working mode: induction trigger, delay trigger.



主打应用行业 / Main application industry

注塑行业。
Injection molding industry.



技术参数 / Technical Parameters

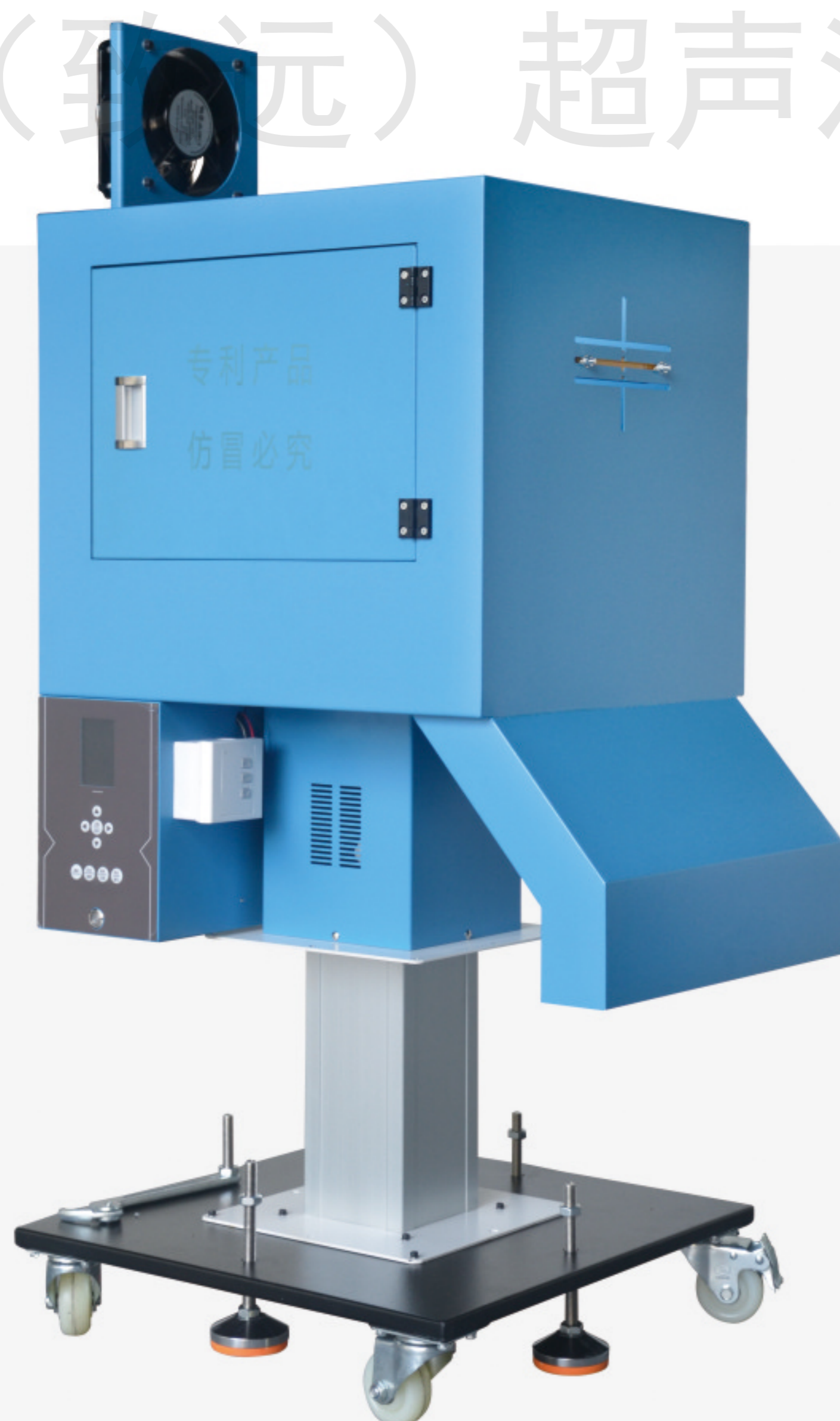
工作频率 working frequency	15KHZ	20KHZ	15KHZ
输出功率 Output Power	2600W	2000W	3200W
语言选择 language selection	中文/英文		
输入电压 Input voltage	单相AC220V		
频率范围 Frequency Range	±0.5KHZ		
振幅调整 Amplitude adjustment	1%-100%可调		
焊接时间 Welding time	0.01-9.99s		
振头冷却 Vibrating head cooling	风冷		
机器尺寸 Machine size	600*500*1360-1700mm		
升降高度 Lifting height	1.36m-1.7m		
机器重量 Machine weight	约130KG		
换能器离地高度 Transducer height from the ground	95-128CM		

第 II 代 立式振水口机

Vertical vibration nozzle machine

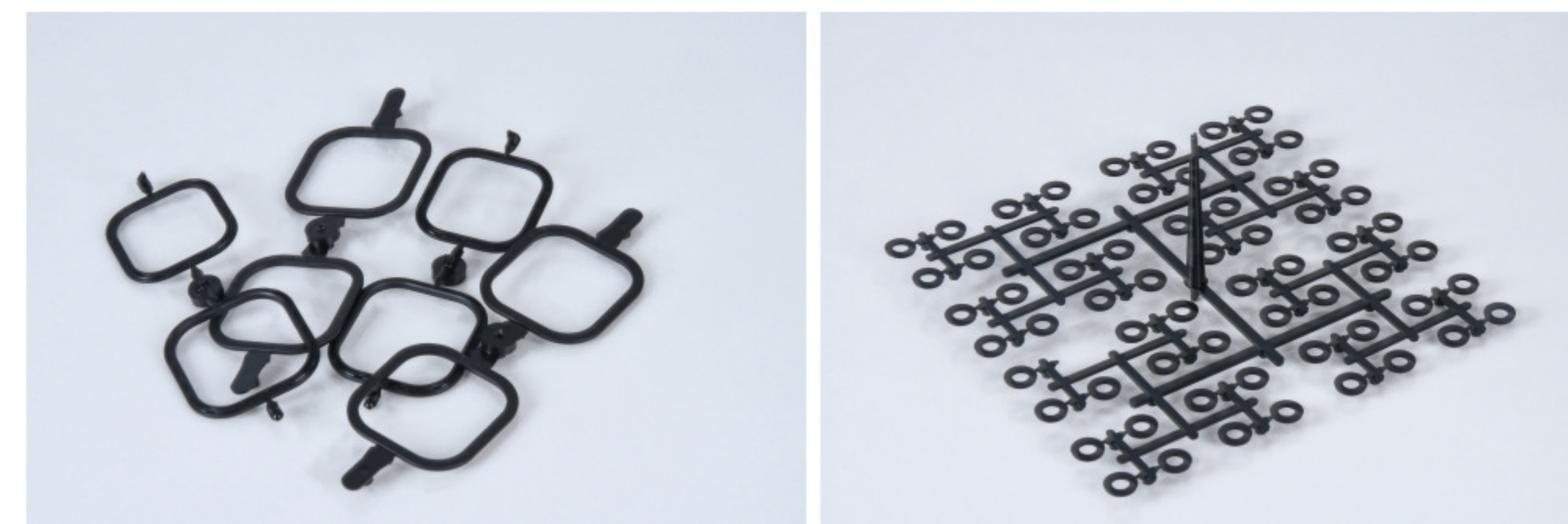
特点 / Features

- 升级款操作系统，开机自动追踪频率。
- 注塑机专用，机身高度可电动调节。
- 输出稳定，产品分离不变形、无残留水口。
- 工作模式：感应触发、延时触发。
- Upgraded operating system, automatic frequency tracking when booting.
- For injection molding machine, the height of the body can be adjusted electrically.
- The output is stable, and the product is separated without deformation and no residual nozzle.
- Working mode: induction trigger, delay trigger.



主打应用行业 / Main application industry

注塑行业。
Injection molding industry.



恒波（致远）超声波设备

技术参数 / Technical Parameters

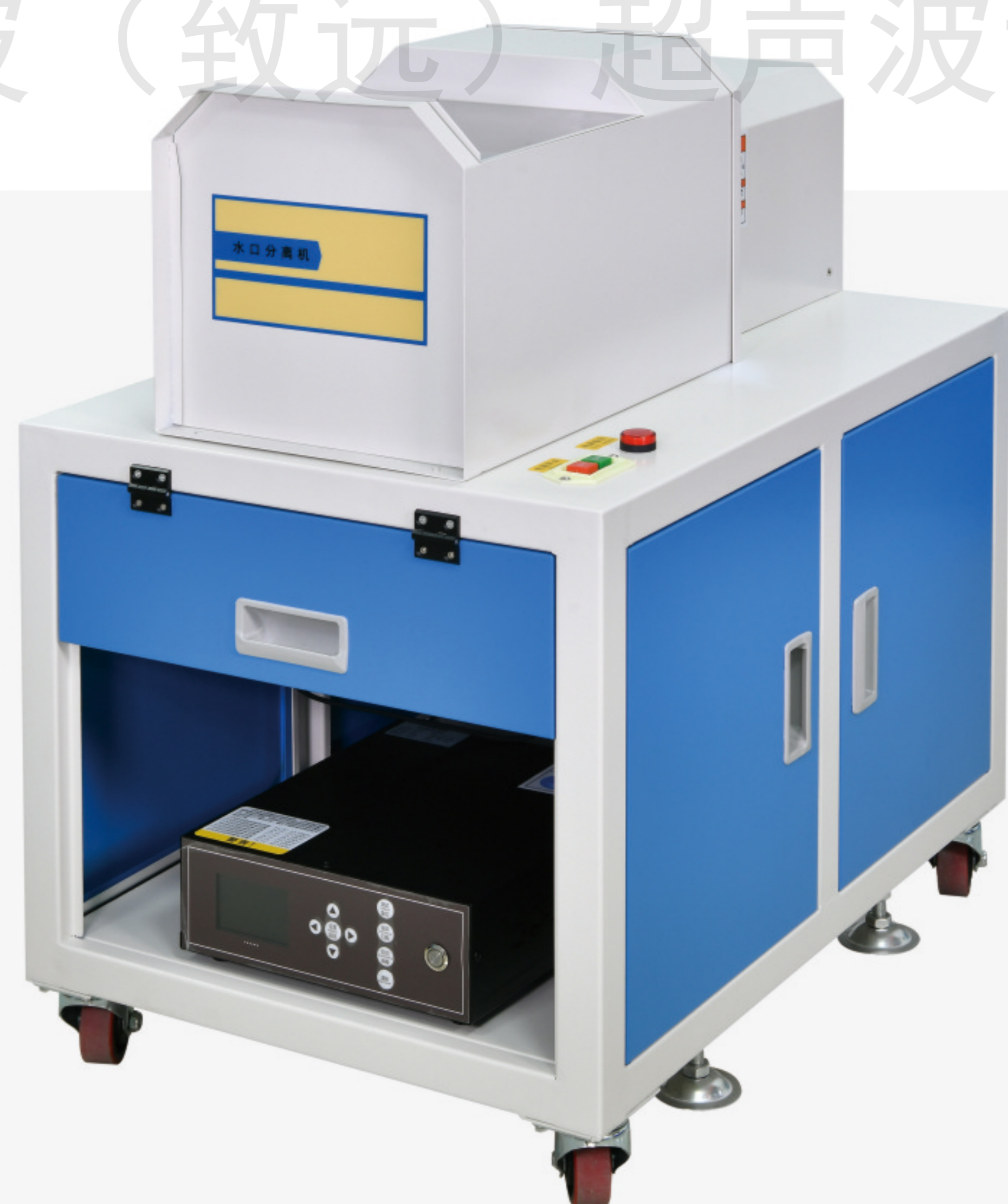
工作频率 working frequency	15KHZ	20KHZ
输出功率 Output Power	2600W	2000W
语言选择 language selection	中文/英文	
输入电压 Input voltage	单相AC220V	
频率范围 Frequency Range	±0.5KHZ	
振幅调整 Amplitude adjustment	1%~100%可调	
焊接时间 Welding time	0.01~9.99s	
振头冷却 Vibrating head cooling	风冷	
机器尺寸 Machine size	600*500*120~1600mm	
升降高度 Lifting height	1.2m~1.7m	
机器重量 Machine weight	约90KG	
换能器离地高度 Transducer height from the ground	80~117CM	

第1代 卧式振水口机

Horizontal vibration nozzle machine

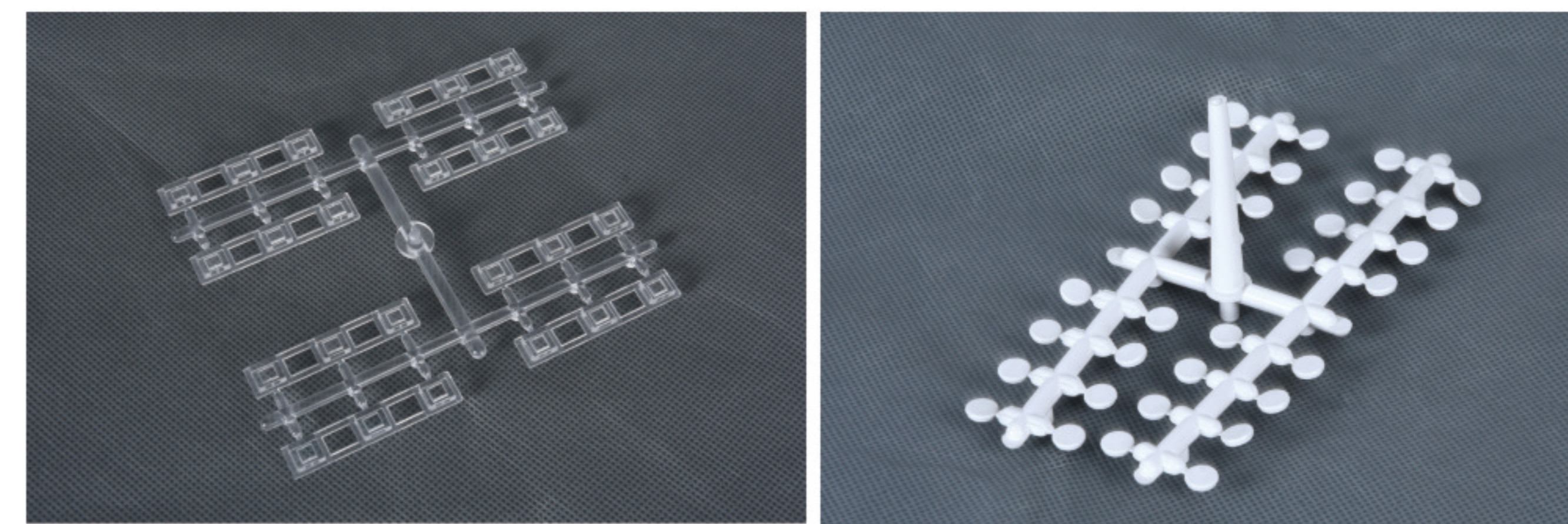
特点 / Features

- 升级款操作系统，开机自动追踪频率。
- 可手动操作，有效提升生产效率。
- 输出稳定，产品分离不变形、无残留水口。
- 工作模式：感应触发、延时触发。
- Upgraded operating system, automatic frequency tracking when booting.
- It can be operated manually to effectively improve production efficiency.
- The output is stable, and the product is separated without deformation and no residual nozzle.
- Working mode: induction trigger, delay trigger.



主打应用行业 / Main application industry

注塑行业。
Injection molding industry.



技术参数 / Technical Parameters

工作频率 working frequency	15KHZ	20KHZ
输出功率 Output Power	2600W	2000W
语言选择 language selection	中文/英文	
输入电压 Input voltage	单相AC220V	
频率范围 Frequency Range	±0.5KHZ	
振幅调整 Amplitude adjustment	1%-100%可调	
焊接时间 Welding time	0.01-9.99s	
振头冷却 Vibrating head cooling	风冷	
电箱尺寸 Electric box size	360*310mm*130mm	
机器尺寸 Machine size	800*560mm*900mm	
机器重量 Machine weight	约70KG	

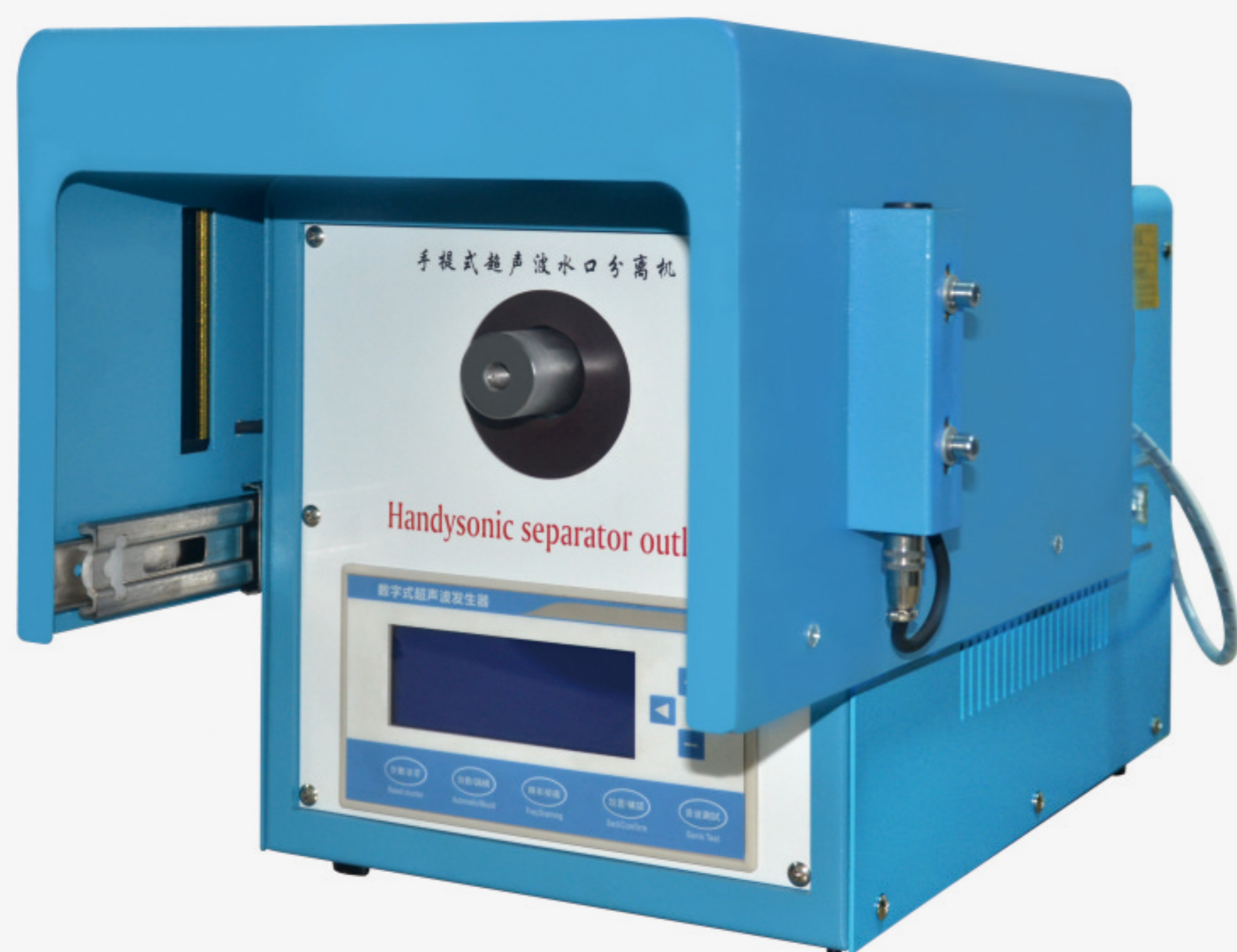
第 II 代 手提式振水口机

Portable vibrating nozzle machine

特点 / Features

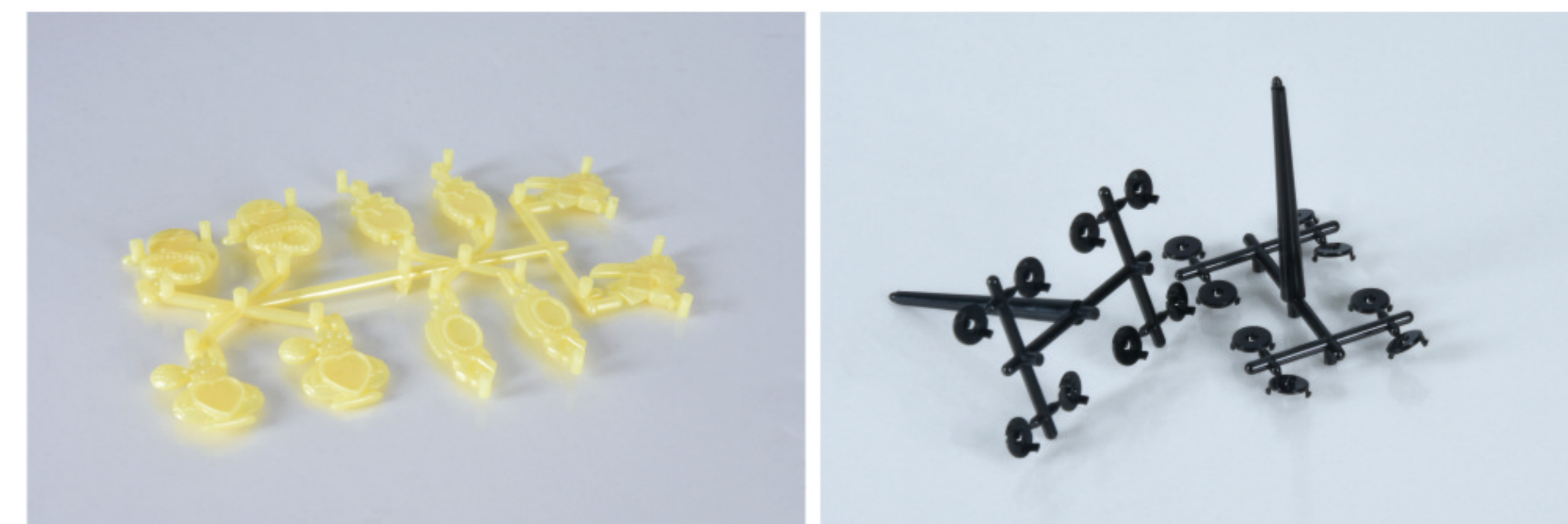
- 便携手提式，体积小、操作简单。
- 高效稳定，取代传统充气剪、人工剪，省时省力。
- 高品质安全，产品分离不变形、无残留水口。
- 可伸缩全自动。
- Portable and portable, small size and simple operation.
- Efficient and stable, replacing traditional inflatable shears and manual shears, saving time and effort.
- High-quality and safe, product separation is not deformed, and there is no residual nozzle.
- Scalable and fully automatic.

恒波（致远）超声波设备



主打应用行业 / Main application industry

注塑行业。
Injection molding industry.



技术参数 / Technical Parameters

工作频率 working frequency	20KHZ
输出功率 Output Power	1500-2000W
语言选择 language selection	中文/英文
输入电压 Input voltage	AC220V
频率范围 Frequency Range	±0.5KHZ
振幅调整 Amplitude adjustment	1%-100%可调
焊接时间 Welding time	0.01-9.99s
振头冷却 Vibrating head cooling	风冷
水口面积 Nozzle area	100-150mm
产品尺寸 Product Size	710mm*310mm*270mm
机器重量 Machine weight	约40KG

自动转盘式焊接机

Automatic turntable welding machine

特点 / Features

- 采用PLC控制，操作简单。
- 自动化批量连续焊接，生产效率高。
- 6工位、8工位，全方位满足焊接需求。
- 有料感应，计数精准。
- 自动出料，机械手可根据产品定制。
- 电流、电压、气压过载保护，确保产品焊接一致性。
- Using PLC control, simple operation.
- Automatic batch continuous welding, high production efficiency.
- 6 stations, 8 stations, all-round meeting welding needs.
- Material induction, accurate counting.
- Automatic discharging, the manipulator can be customized according to the product.
- Current, voltage, and air pressure overload protection to ensure product welding consistency.

恒波（致远）超声波设备



机械手部分

主打应用行业 / Main application industry

电子、电器、玩具、包装、化妆品等。

Electronics, electrical appliances, toys, packaging, cosmetics, etc.



技术参数 / Technical Parameters

工作频率 working frequency	15KHZ	15KHZ	20KHZ	20KHZ
输出功率 Output Power	2600W	3200W	2000W	2600W
语言选择 language selection	中文/英文			
输入电压 Input voltage	单相AC220V			
频率范围 Frequency Range	±0.5KHZ			
振幅调整 Amplitude adjustment	1%-100%可调			
焊头行程 Welding head stroke	50-75mm			
焊接时间 Welding time	0.01-9.99s			
接入气压 Access air pressure	0.1-0.7Mpa			
振头冷却 Vibrating head cooling	风冷			
圆盘尺寸 Disk size	580*20mm			
机器尺寸 Machine size	700*900*1750mm			
机器重量 Machine weight	约215KG			
备注 Remark	夹具/吸盘 可选			

多头式焊接机

Multi-head welding machine

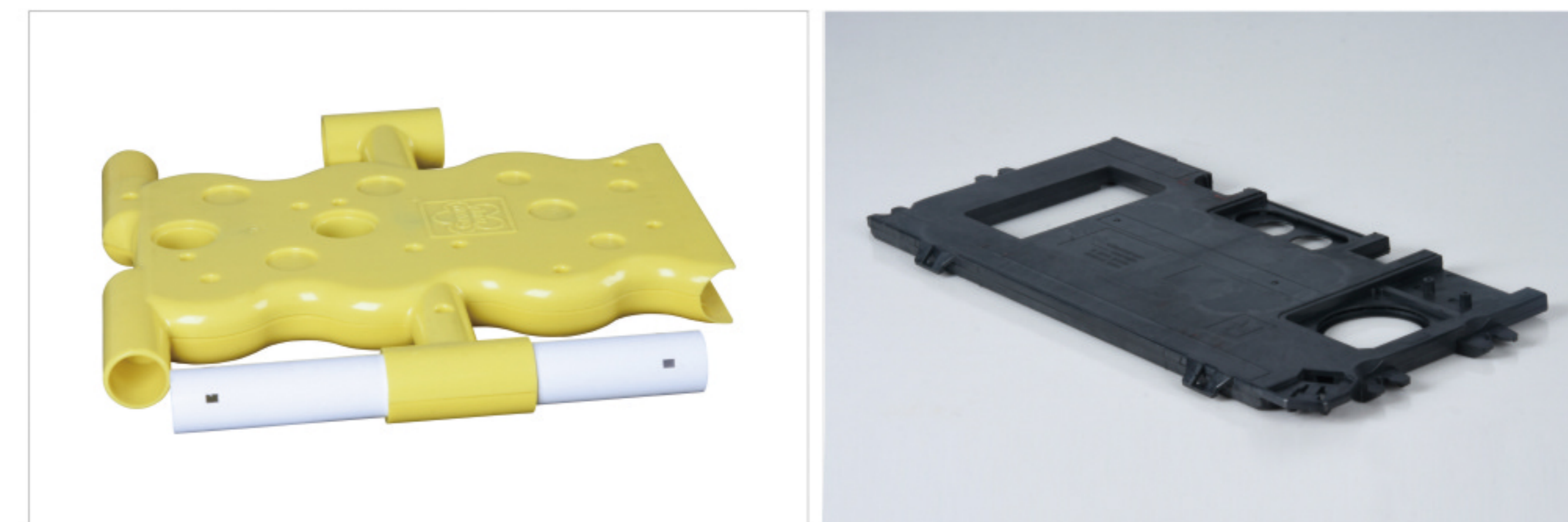
特点 / Features

- 数字追频发生器，智能化频率控制系统。
- 双头式机身，电子系统精准同步控制。
- 支持一键调模功能，调试简单、方便。
- 气动元件采用台湾亚德客，焊接稳定。
- 活动式双轨道调节（可选），灵活性更强。
- Digital frequency tracking generator, intelligent frequency control system.
- Double-headed fuselage, the electronic system is precisely and synchronously controlled.
- It supports one-key modulating function, and debugging is simple and convenient.
- The pneumatic components adopt Taiwan Airtac, and the welding is stable.
- Movable dual-track adjustment (optional), more flexibility.



主打应用行业 / Main application industry

大型塑胶件。
Large plastic parts.



技术参数 / Technical Parameters

工作频率 working frequency	15KHZ	15KHZ	15KHZ	20KHZ	20KHZ
输出功率 Output Power	2600W	3200W	4200W	2000W	2600W
语言选择 language selection	中文/英文				
输入电压 Input voltage	单相AC220V				
频率范围 Frequency Range	±0.5KHZ				
振幅调整 Amplitude adjustment	1%-100%可调				
焊头行程 Welding head stroke	75-100mm				
焊接时间 Welding time	0.01-9.99s				
接入气压 Access air pressure	0.1-0.7Mpa				
振头冷却 Vibrating head cooling	风冷				
工作台尺寸 working desk size	1050*600*20mm				
机器尺寸 Machine size	1050*700*1650mm				
机器重量 Machine weight	约330KG				

旋转式熔接机

Rotary welding machine

特点 / Features

- 采用PLC控制，参数设定直观准确，操作简单。
- 电磁刹车离合器与电机配合，运转平稳可靠。
- 高合格率适用于超声波不易焊接的圆形工件。
- 焊接产品不良率低，适用于多种材质焊接。
- 可根据工件大小更换不同上下模具。
- Using PLC control, the parameter setting is intuitive and accurate, and the operation is simple.
- The electromagnetic brake clutch cooperates with the motor to ensure stable and reliable operation.
- The high qualification rate is suitable for round workpieces that are not easy to weld by ultrasonic waves.
- The defective rate of welding products is low, and it is suitable for welding a variety of materials.
- Different upper and lower moulds can be changed according to the size of the workpiece.



主打应用行业 / Main application industry

球形塑胶件。
Spherical plastic parts.



恒波（致远）超声波设备

技术参数 / Technical Parameters

输入电压 Input voltage	AC380V
马达功率 Motor power	2200W
额定转速 Rated speed	2840 r/min
焊接时间 Welding time	0.1-9.99s
马达冷却 Motor cooling	风冷
焊头行程 Welding head stroke	75mm
接入气压 Access air pressure	0.1-0.7Mpa
工作台尺寸 working desk size	650*650*20mm
机器尺寸 Machine size	740*650*1650mm
机器重量 Machine weight	约140KG

点焊机系列 / Spot welding machine series

| 诚信 · 务实 · 专注 · 高效 |

点焊机系列

超声波点焊机

Ultrasonic Spot Welder

特点 / Features

- 自动追频，无需人工调频。
- 焊接时间、风冷时间可调。
- 焊接振幅、时间可调，焊接精准度高。
- 工作模式：点动触发、按启松停、外控。
- Automatic frequency tracking, without manual frequency adjustment.
- Welding time and air cooling time are adjustable.
- The welding amplitude and time are adjustable, and the welding accuracy is high.
- Working mode: jog trigger, press start/release stop, external control.

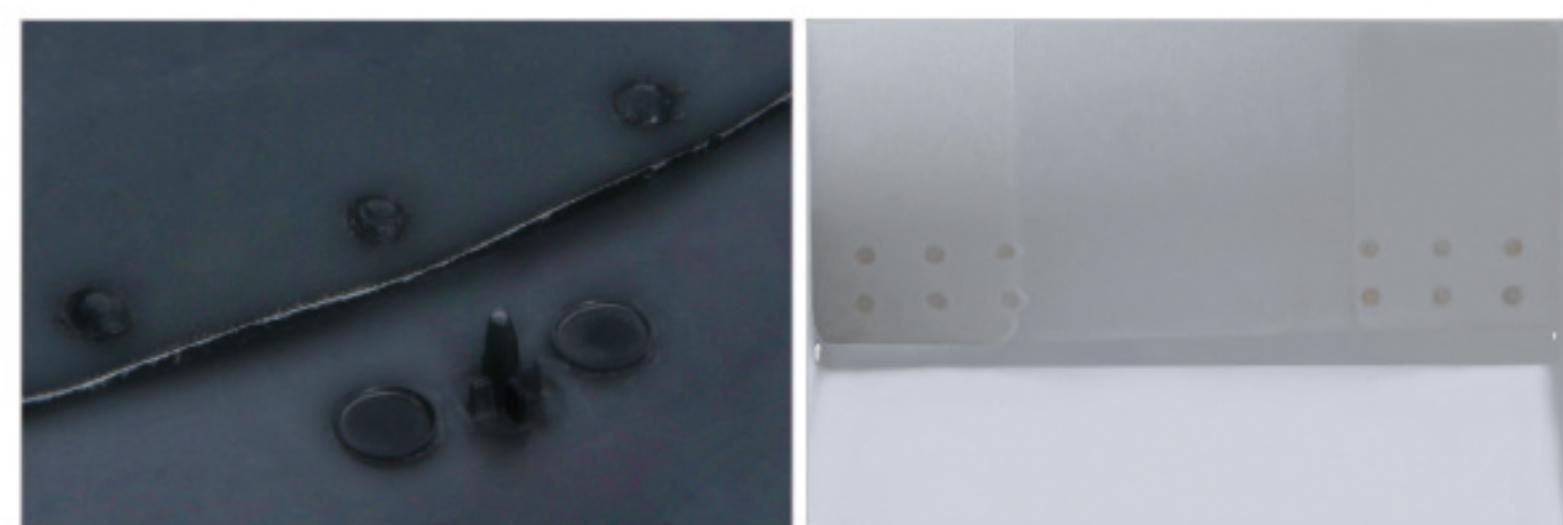
技术参数 / Technical Parameters

工作频率 working frequency	20KHZ	28KHZ	30KHZ	35KHZ	40KHZ
输出功率 Output Power	2000W	1200W	1000W	800W	600W
外形尺寸 Dimensions	340mm × 220mm × 120mm				
主机净重 Host net weight	5.5KG				
工作电源 Power supply	单相AC220V 50HZ				
自动追频精度 Automatic frequency tracking accuracy	±0.5HZ				
熔接时间 Splicing time	0.1-9.99s				
手焊枪类型 Hand welding gun type	手持式/手握式 可选				



主打应用行业 / Main application industry

口罩、汽车、包装、皮具、无纺布等。
Masks, automobiles, packaging, leather goods, non-woven fabrics, etc.



手焊枪-手握式

28K



30K



35K



手焊枪-手持式

20K



28K



35K



换能器系列 / TRANSDUCER SERIES

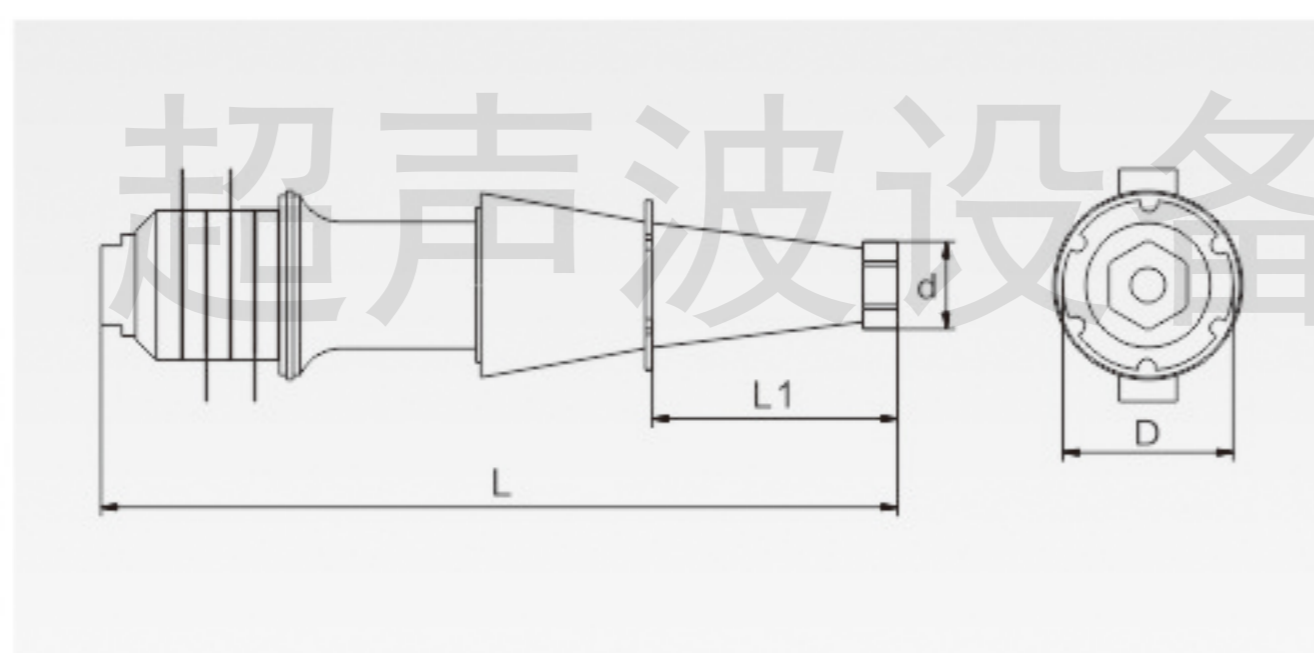
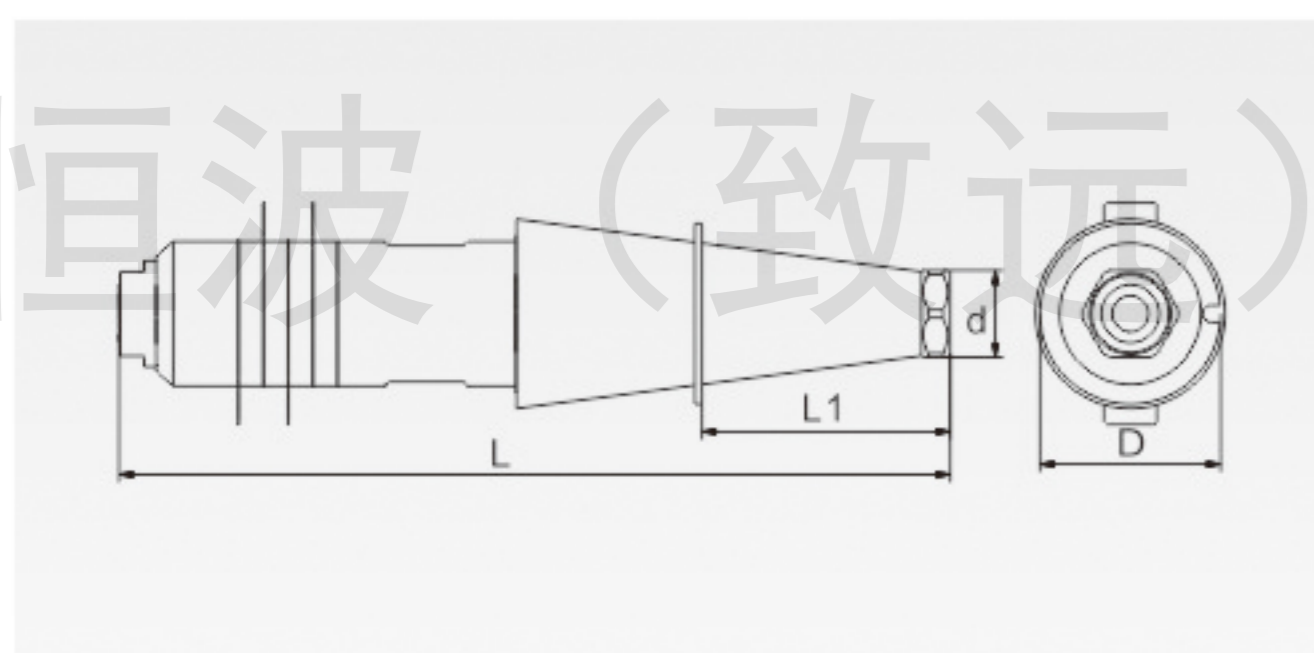
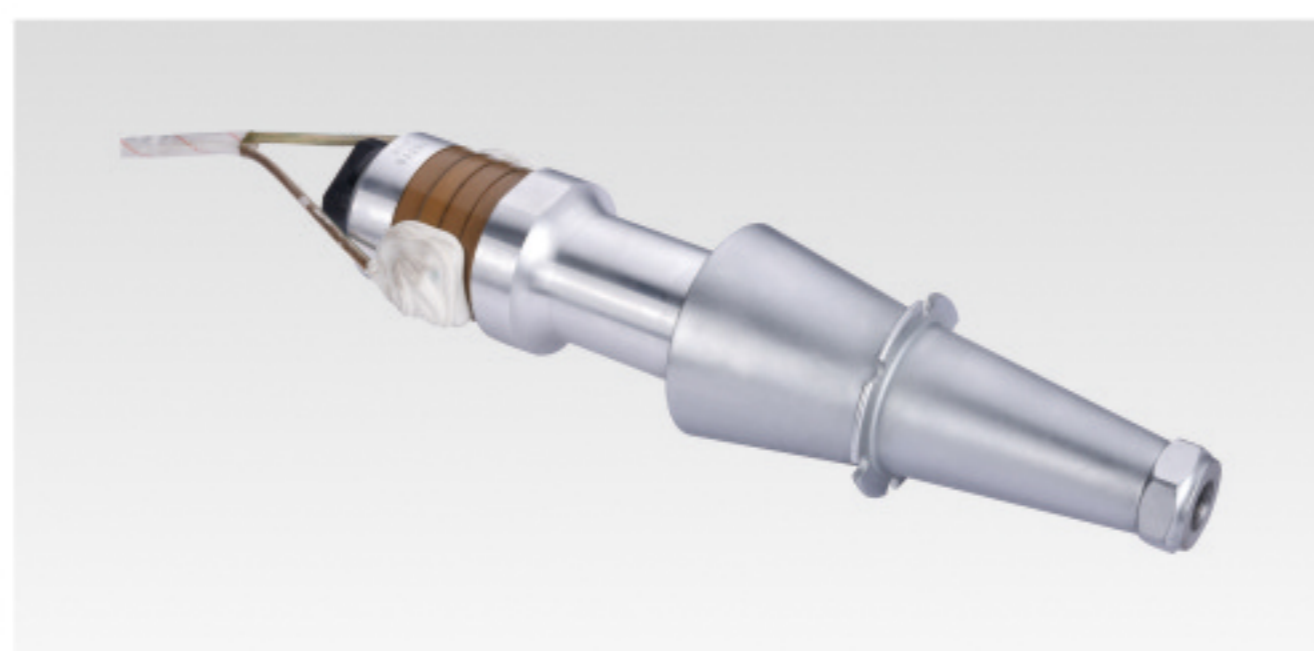
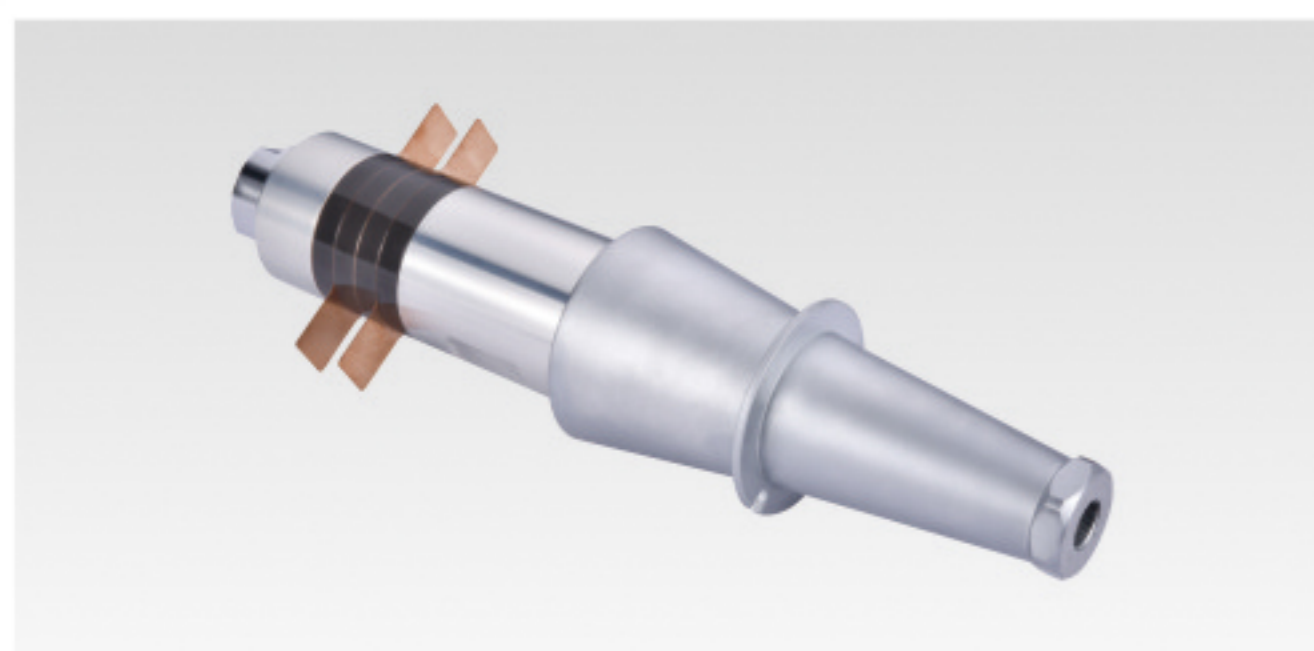
| 诚信 · 务实 · 专注 · 高效 |

换能器系列

15K 2600W 15K 2600W倒喇叭

压电直径: $\phi 60 \times \phi 30 \times 10$ (P4)
 螺纹规格: M24*1.5/M16*1 常规叫法: 15K塑焊
 d: 36mm D: 75mm L1: 103mm L: 345mm

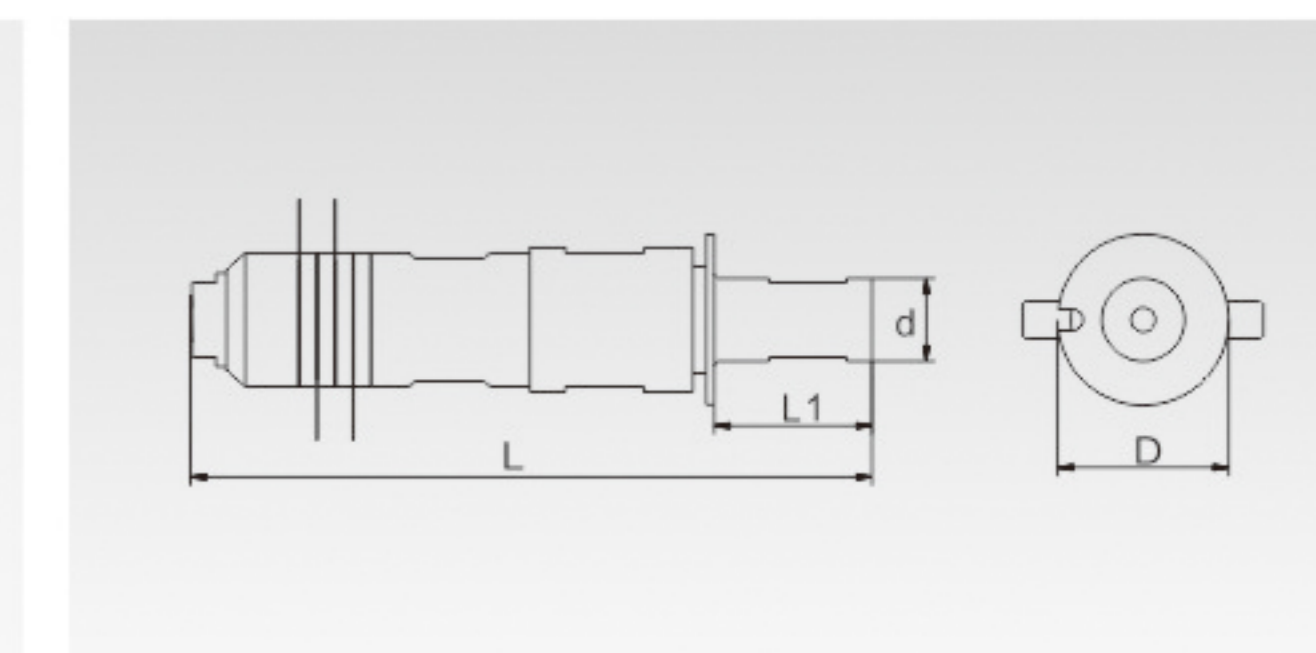
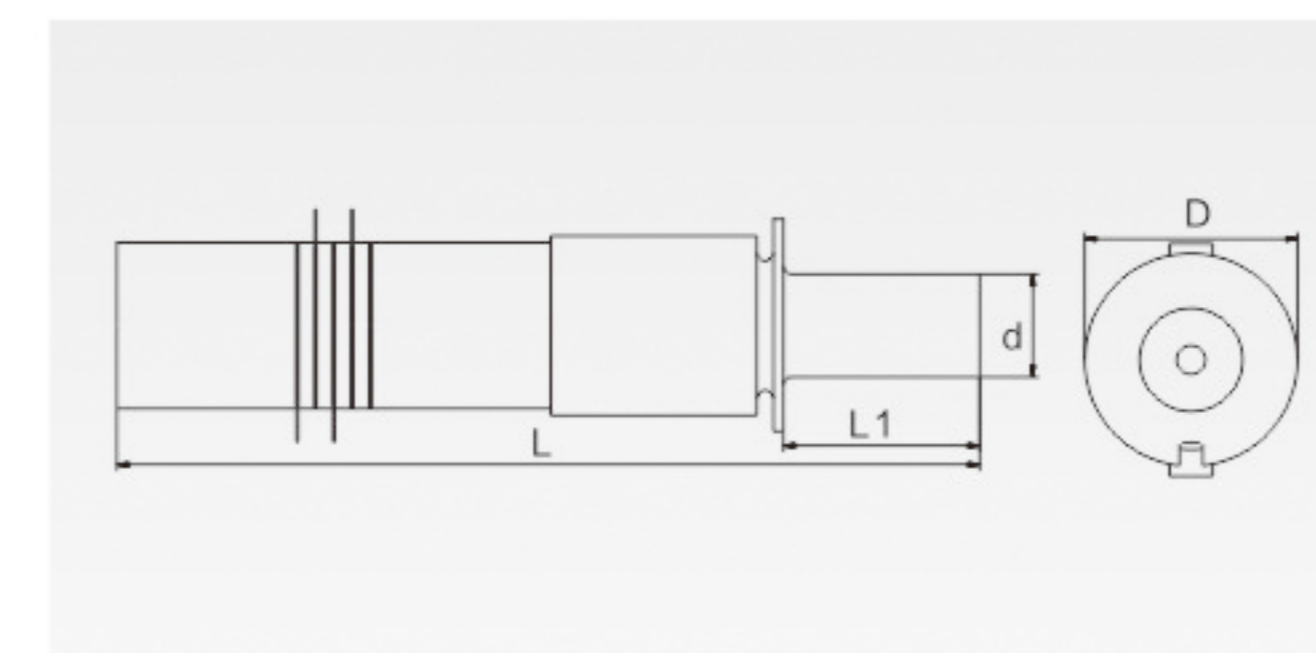
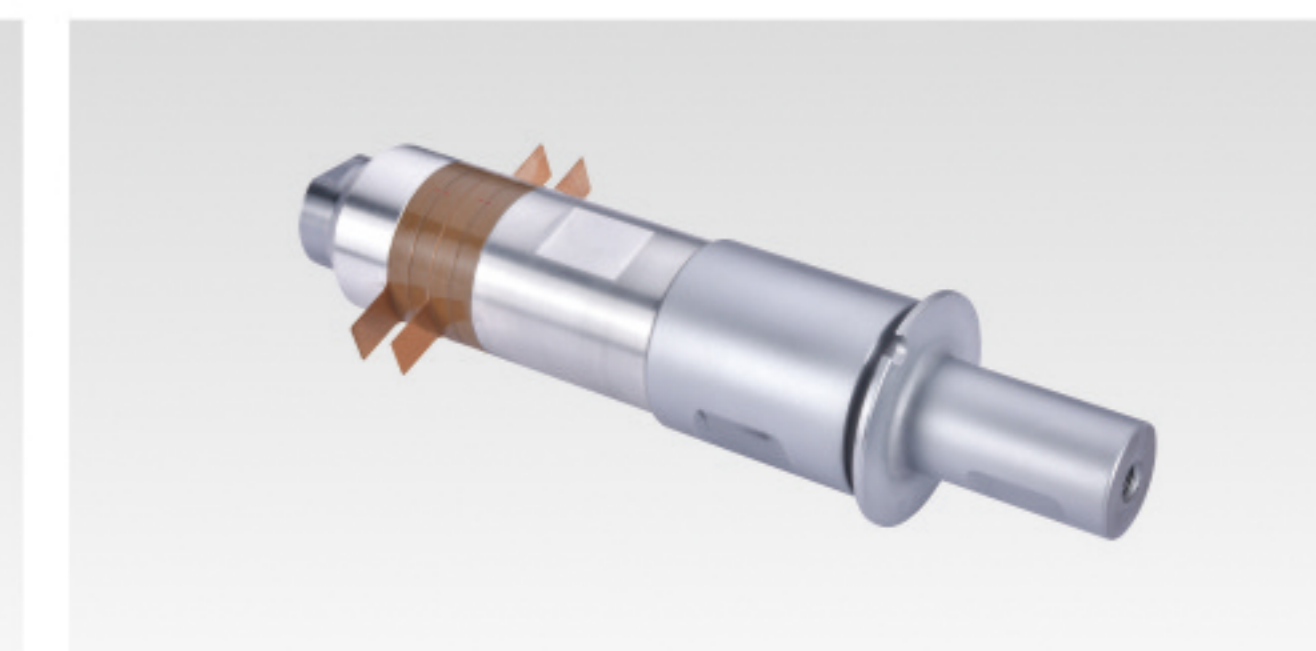
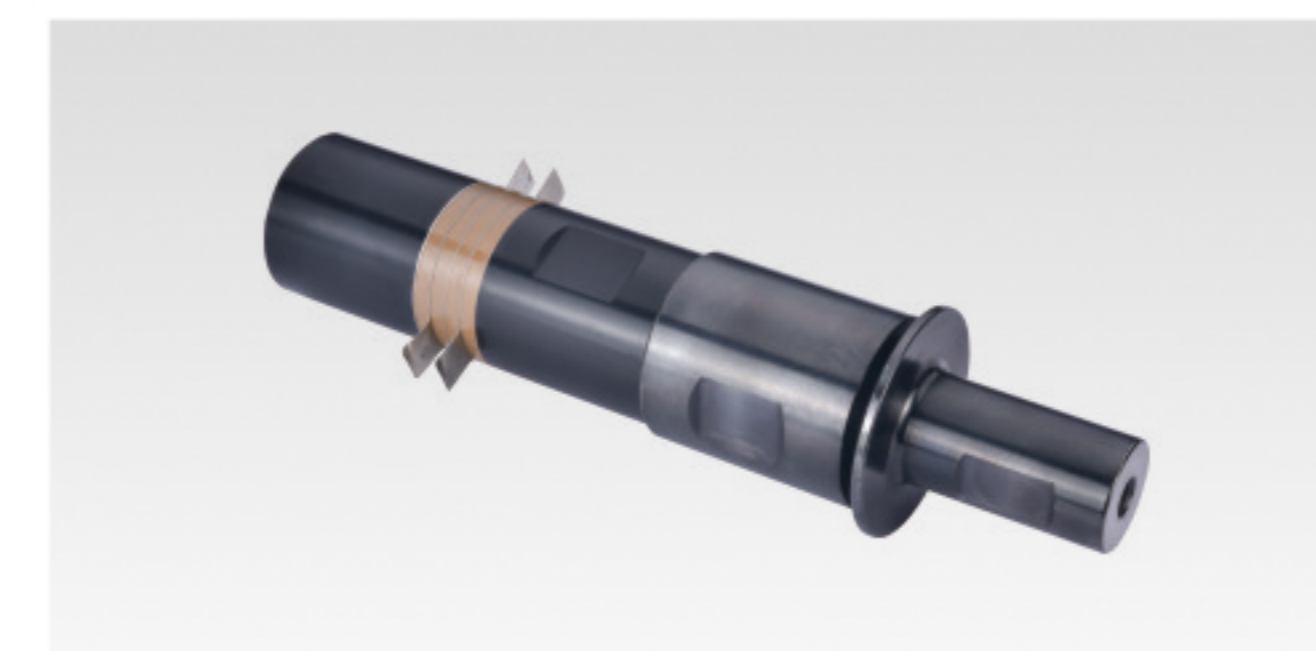
压电直径: $\phi 60 \times \phi 30 \times 10$ (P4)
 螺纹规格: M24*1.5/M16*1 常规叫法: 15K倒喇叭
 d: 38mm D: 74mm L1: 106mm L: 345mm



20K 1200W 20K 2000W

压电直径: $\phi 50 \times 4$
 螺纹规格: $\frac{3}{8}$ -24 常规叫法: 20K 1200W
 d: 31mm D: 64mm L1: 59mm L: 258.5mm

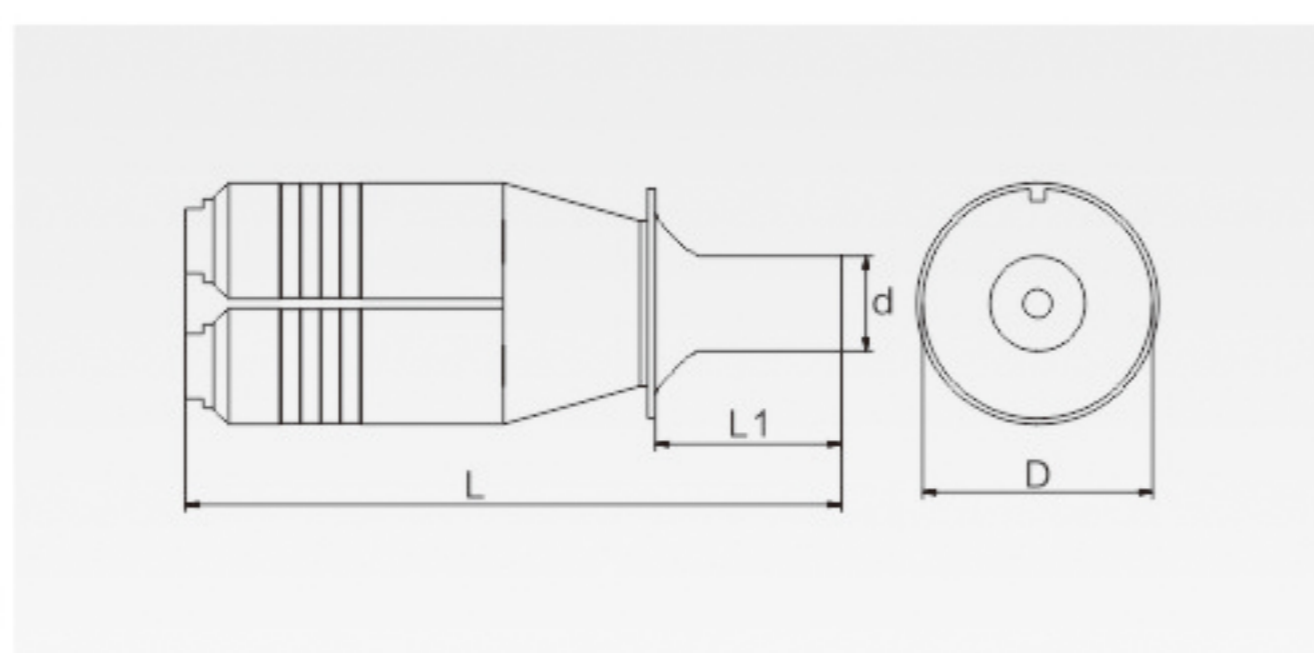
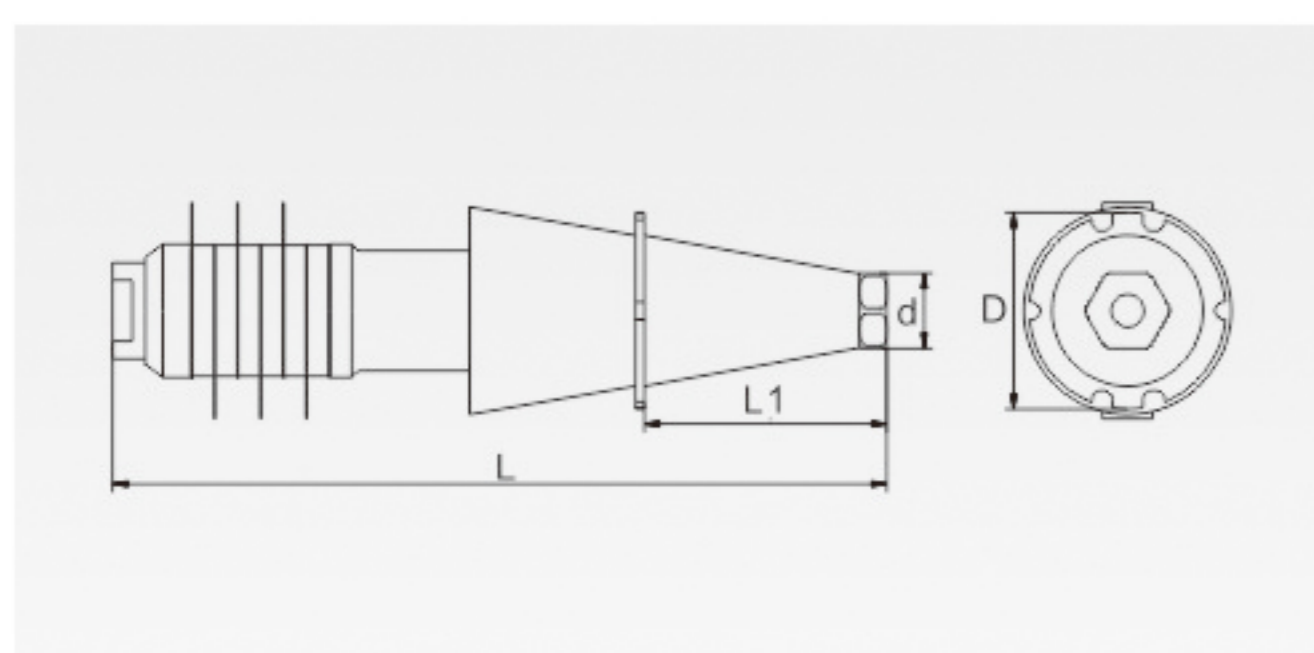
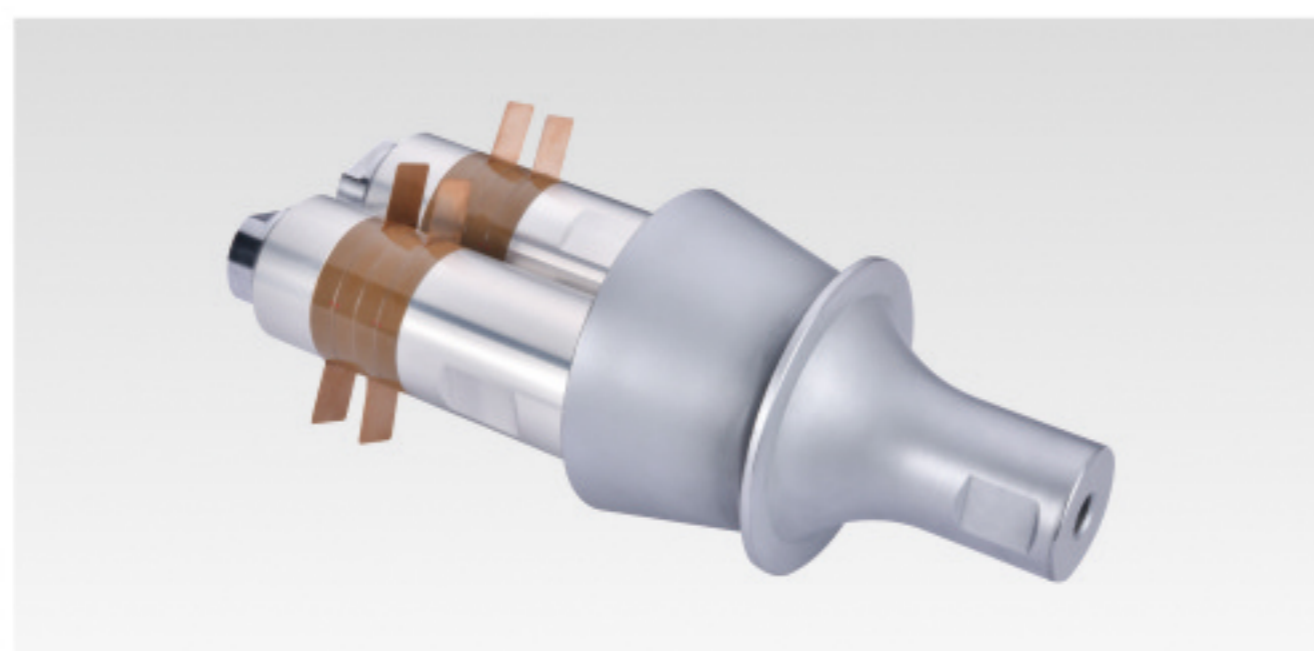
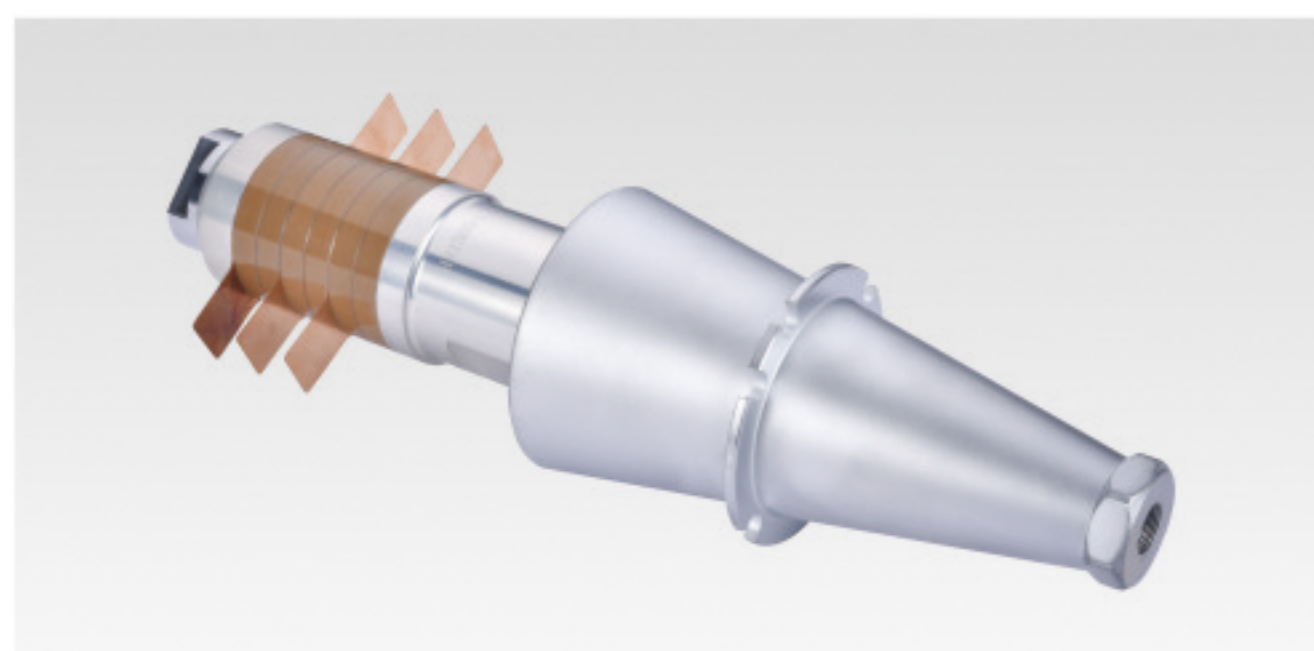
压电直径: $\phi 50 \times \phi 20 \times 6.5$ (P8) 两组
 螺纹规格: M18*1.5/ $\frac{3}{8}$ -24 常规叫法: 20K 2000
 d: 31mm D: 64mm L1: 59mm L: 255mm



15K 3200W单头 15K 4200W

压电直径: $\phi 60 \times \phi 30 \times 10$ (P8)
 螺纹规格: M24*1.5/M16*1 常规叫法: 单头3200
 d: 39.5mm D: 90mm L1: 111mm L: 355mm

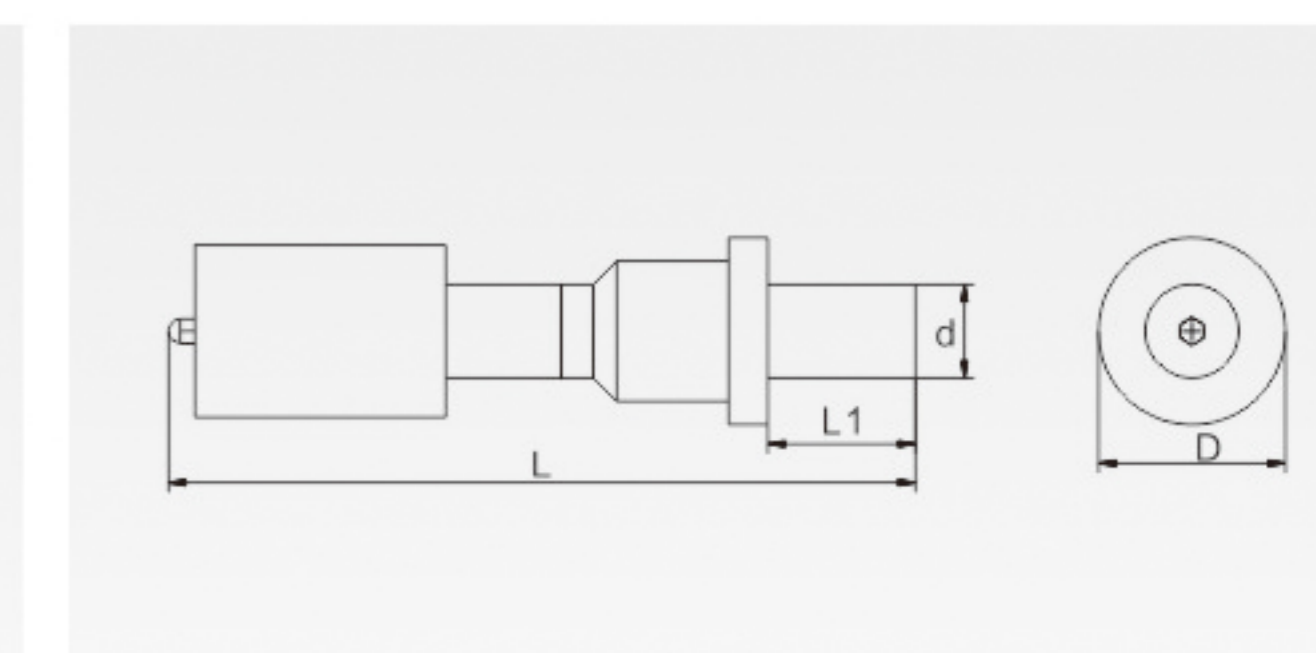
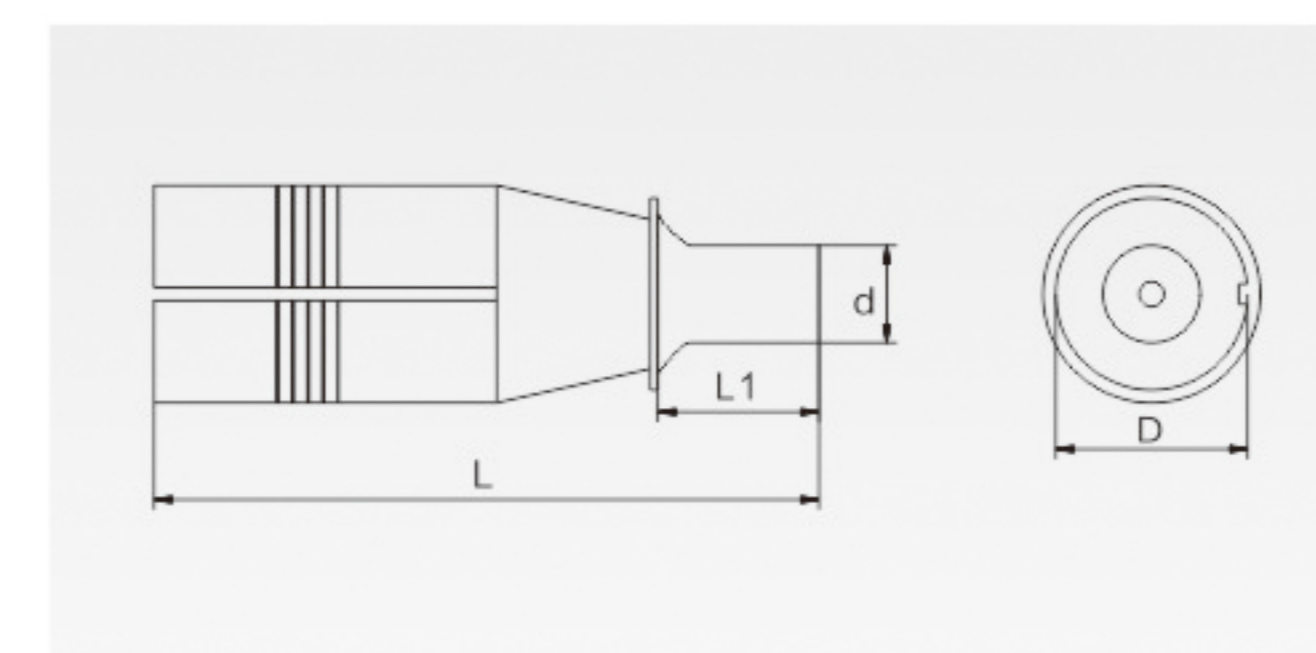
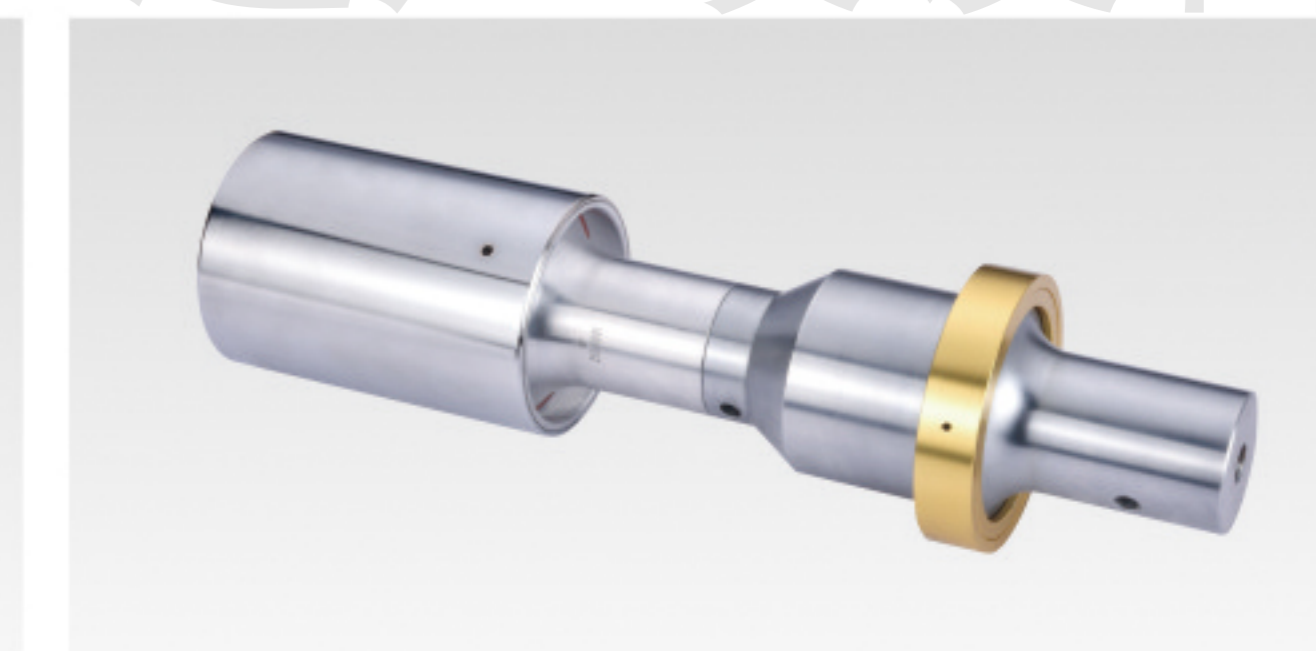
压电直径: $\phi 60 \times \phi 30 \times 10$ (P8) 两组
 螺纹规格: M24*1.5/M16*1 常规叫法: 15K 4200
 d: 50mm D: 98mm L1: 120mm L: 345mm



20K 2600W 20K 美式换能器

压电直径: $\phi 38 \times 2$ 组
 螺纹规格: ($\frac{3}{8}$ -24) ($\frac{3}{8}$ -20) 常规叫法: 20K 双头
 d: 38mm D: 75mm L1: 63mm L: 260mm

压电直径: $\phi 50 \times 4$
 螺纹规格: $\frac{3}{8}$ -24 常规叫法: 美式换能器
 d: 38mm D: 76mm L1: 60mm L: 303mm



换能器系列 / TRANSDUCER SERIES

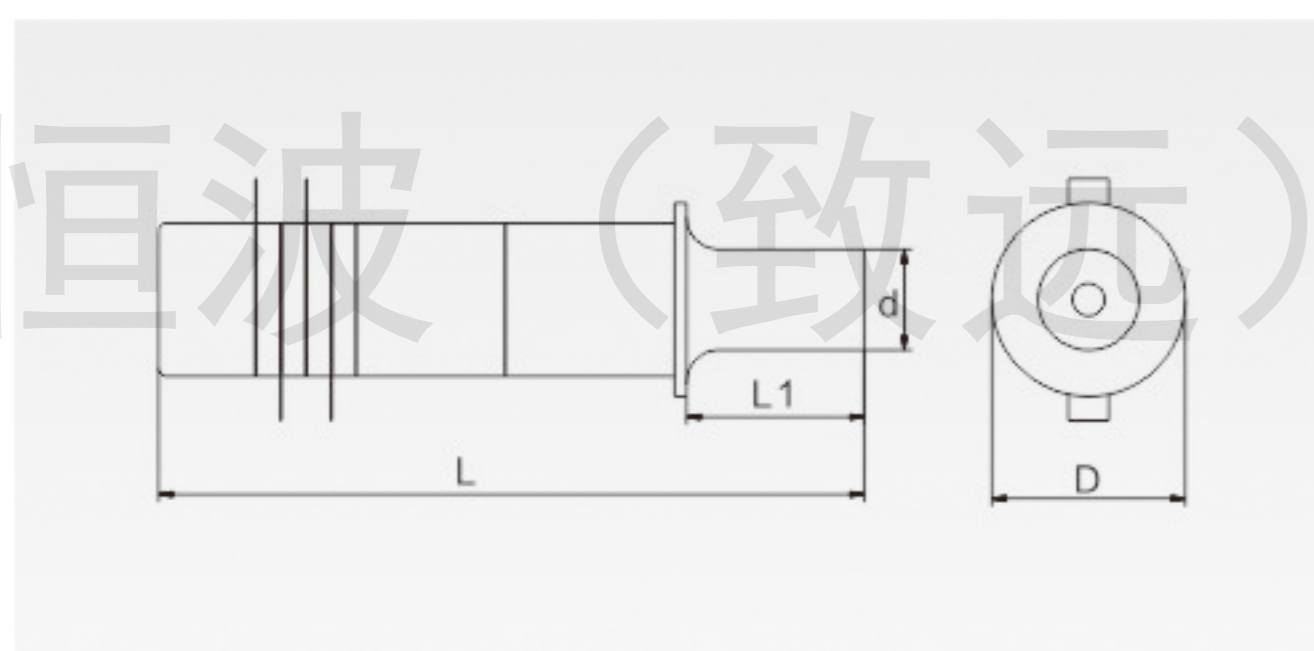
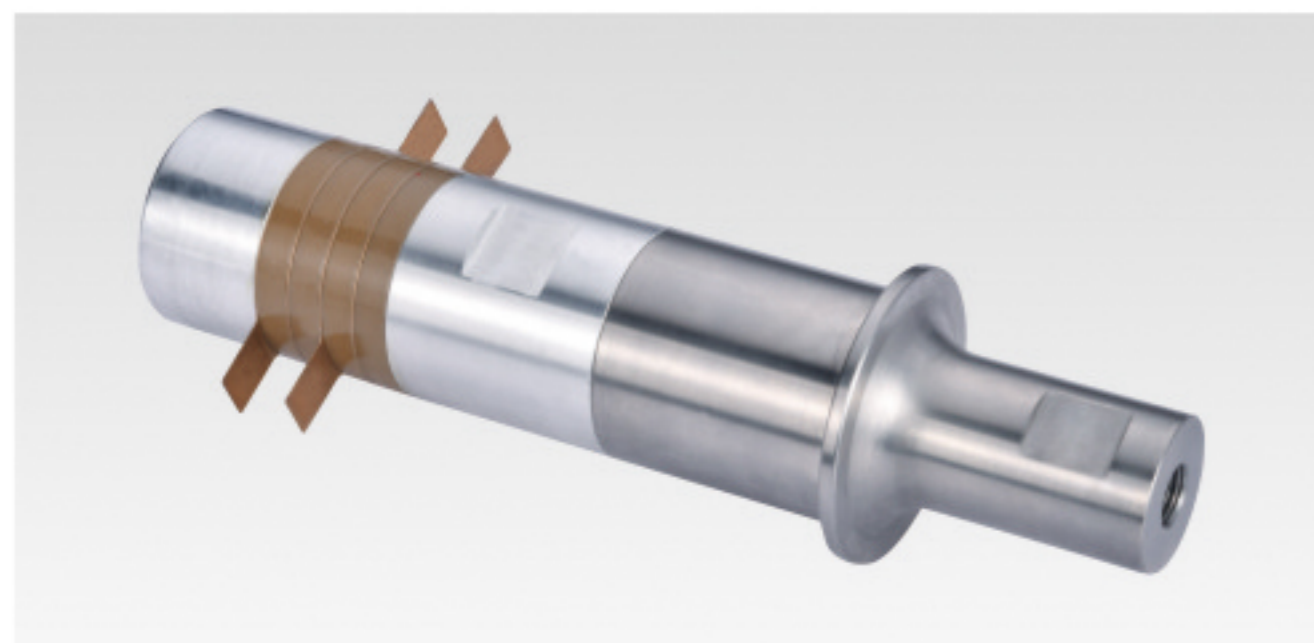
配件系列 / ACCESSORIES SERIES

| 诚信 · 务实 · 专注 · 高效 |

换能器系列

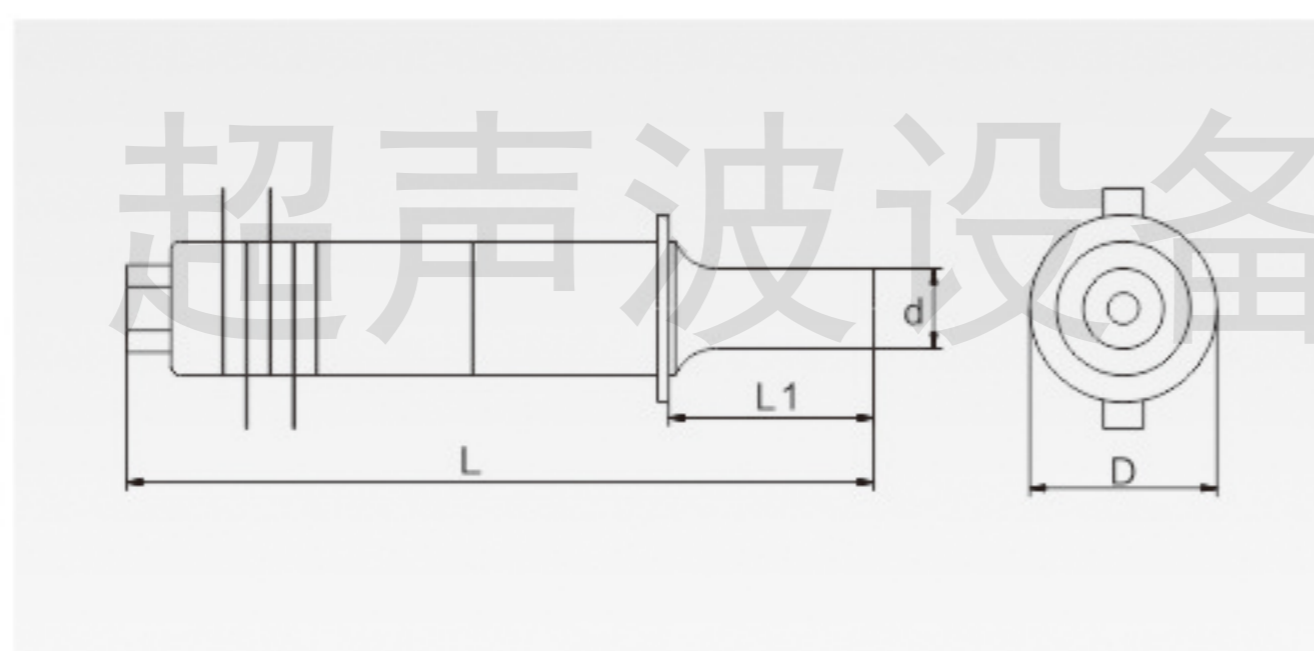
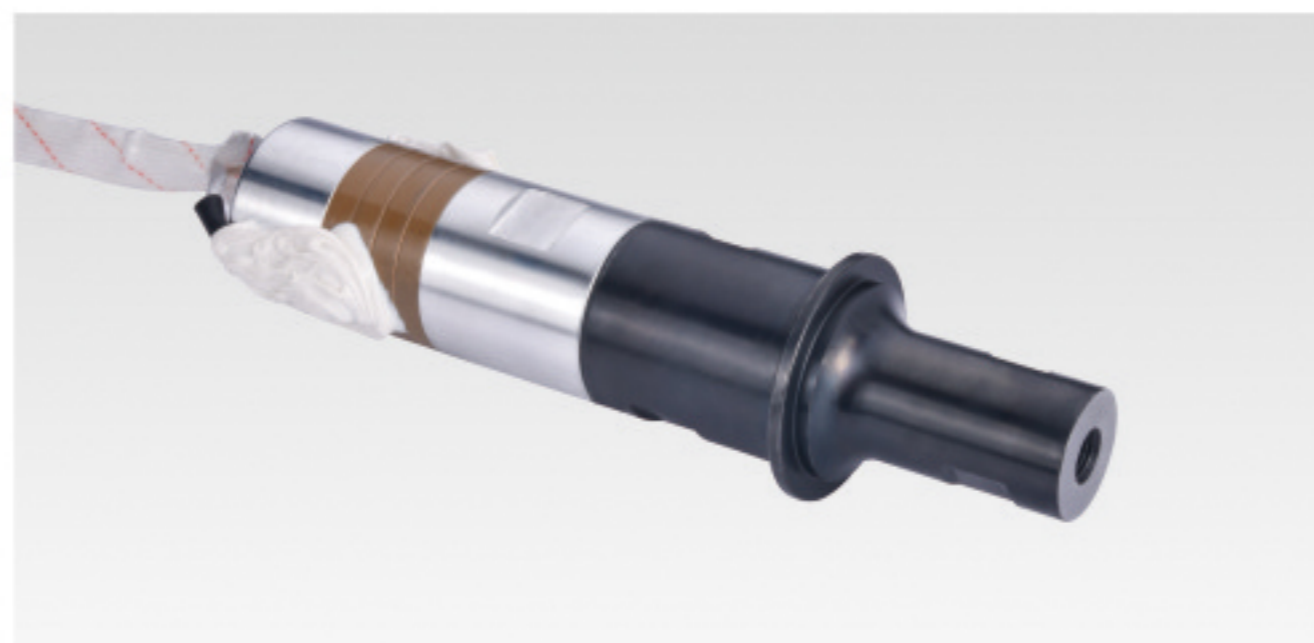
28K

压电直径: $\phi 38$ 螺纹规格: $\frac{3}{8}$ -24 常规叫法: 20K 柱形
d: 25mm D: 48mm L1: 44mm L: 175mm



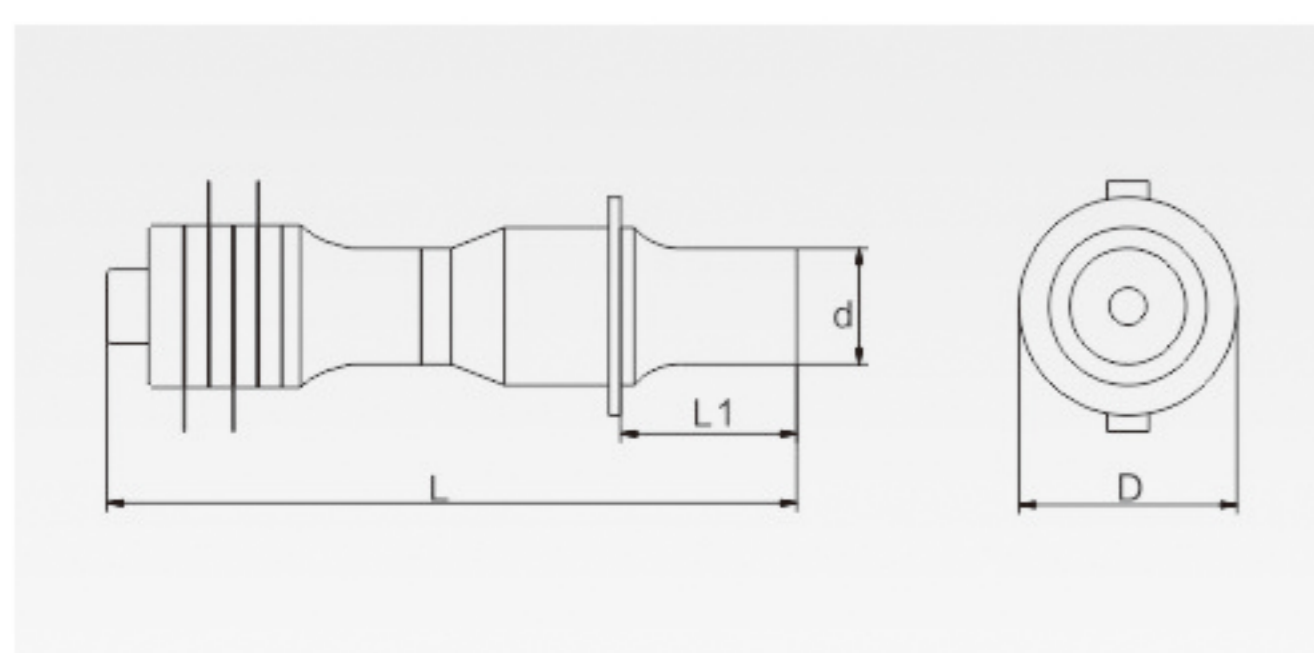
30K

压电直径: $\phi 30 * 4$ 螺纹规格: M8*1.25 常规叫法: 30K
d: 18mm D: 42mm L1: 46mm L: 168mm



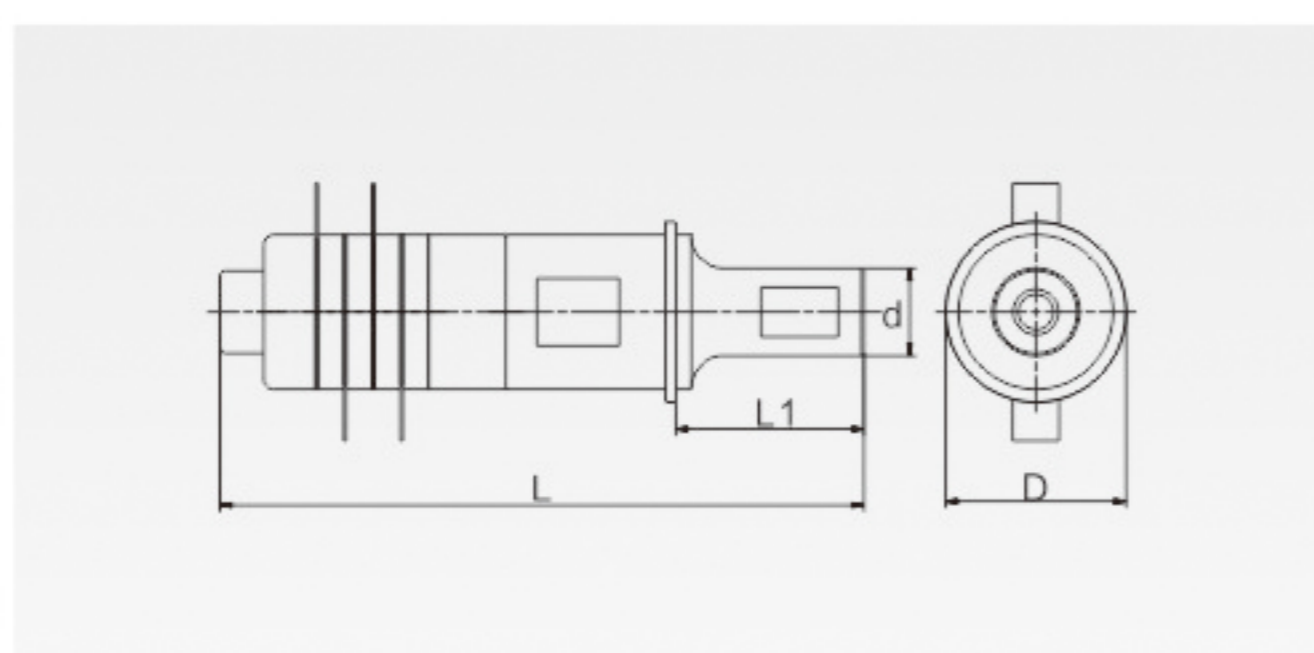
35K

压电直径: $\phi 35$ 螺纹规格: M8 常规叫法: 35K
d: 25mm D: 47mm L1: 38mm L: 149mm



40K

压电直径: $\phi 30 * 4$ 螺纹规格: M8*1.25 常规叫法: 40K
d: 17mm D: 35mm L1: 36.5mm L: 125mm



法兰盘

FLANGE

20K 2000W



15K 2600W



15K 3200W



15K 4200W



恒波（致远）超声波设备

光栅

RASTER



生产车间 / PRODUCTION WORKSHOP

| 诚信 · 务实 · 专注 · 高效 |

生产车间

PRODUCTION WORKSHOP

生产车间

精密的产品出自精湛的模具、精良的设备、先进的软件，精密的设备使我们生产出的产品达到精、准、零缺陷的要求，让客户充分满意。

As we process good product moulding facilities and latest software, we are able to produce a high level of products with precious measurement, specification with zero error. Hence, we strongly believe our products can fully a chieveour customer's requirement.



品质管控 / Quality control



精益求精，不断挑战新高度
KEEP IMPROVING CONSTANTLY
CHALLENGE NEW HEIGHTS

仓储能力 / Storage capacity

